

## ATG7 RABBIT MAB

**Cat.#:** N261770

**Product Name:** Anti-ATG7 Rabbit Monoclonal Antibody

**Synonyms:** hAGP7; Ubiquitin-activating enzyme E1-like protein; APG7L

**UNIPROT ID:** O95352

**Background:** The molecular machinery of autophagy was largely discovered in yeast and referred to as autophagy-related (Atg) genes. Formation of the autophagosome involves a ubiquitin-like conjugation system in which Atg12 is covalently bound to Atg5 and targeted to autophagosome vesicles. This conjugation reaction is mediated by the ubiquitin E1-like enzyme Atg7 and the E2-like enzyme Atg10.

**Immunogen:** A synthetic peptide of human ATG7

**Applications:** WB,IP

**Recommended Dilutions:** WB: 1/500-1/1000 IP: 1/20

**Host Species:** Rabbit

**Clonality:** Rabbit Monoclonal

**Clone ID:** R01-6E1

**MW:** Calculated MW: 78 kDa; Observed MW: 78 kDa

**Isotype:** IgG

**Purification:** Affinity Purified

**Species Reactivity:** Human

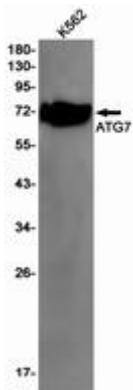
**Conjugation:** Unconjugated

**Modification:** Unmodified

**Constituents:** PBS (without Mg<sup>2+</sup> and Ca<sup>2+</sup>), pH 7.3 containing 50% glycerol, 0.5% BSA and 0.02% sodium azide

**Research Areas:** Cell Biology

**Storage & Shipping:** Store at -20°C. Avoid repeated freezing and thawing



Western blot analysis of ATG7 in K562 lysates using ATG7 antibody.