

ATG5 RABBIT PAB

Cat.#: S217018

Product Name: Anti-ATG5 Rabbit Polyclonal Antibody

Synonyms: ASP; APG5; APG5L; hAPG5; APG5-LIKE

UNIPROT ID: Q9HIY0 (Gene Accession - BC002699)

Background: Autophagy protein 5 is a protein that in humans is encoded by the ATG5 gene. It is an E3 ubiquitinligase which is necessary for autophagy due to its role in autophagosome elongation. It is activated by ATG7 and forms a complex with ATG12 and ATG16L1. This complex is necessary for LC3-I conjugation to PE to form LC3-II.

Immunogen: Fusion protein of human ATG5

Applications: ELISA, IHC

Recommended Dilutions: IHC: 50-200; ELISA: 1000-5000

Host Species: Rabbit

Clonality: Rabbit Polyclonal

Isotype: Immunogen-specific rabbit IgG

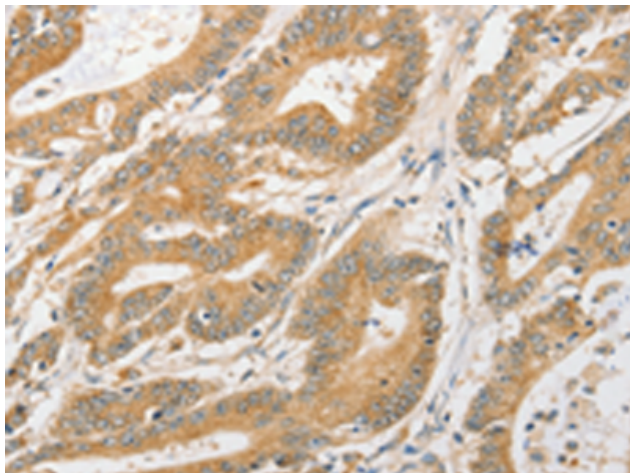
Purification: Antigen affinity purification

Species Reactivity: Human, Mouse, Rat

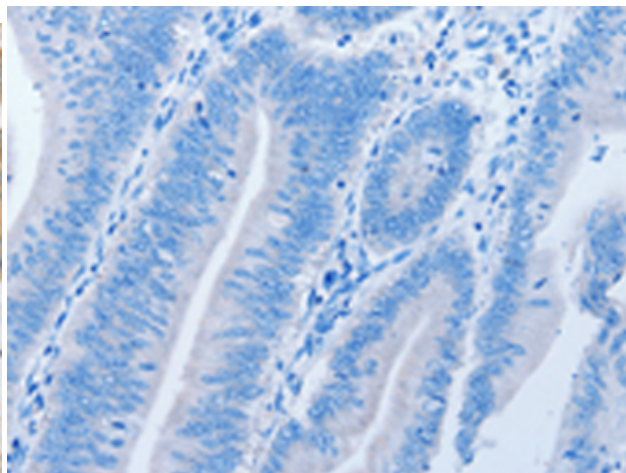
Constituents: PBS (without Mg²⁺ and Ca²⁺), pH 7.4, 150 mM NaCl, 0.05% Sodium Azide and 40% glycerol

Research Areas: Cancer, Cell Biology, Cardiovascular

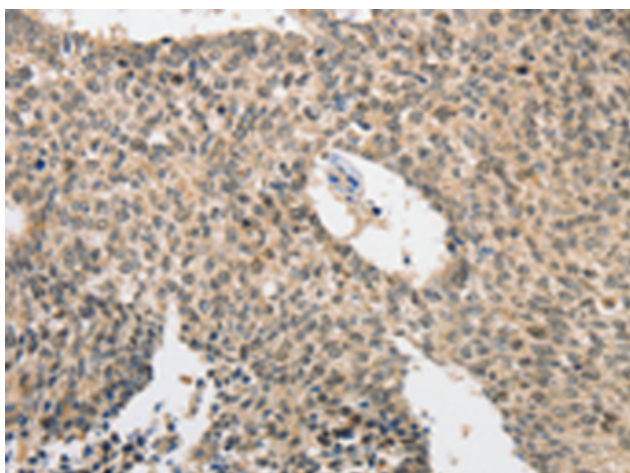
Storage & Shipping: Store at -20°C. Avoid repeated freezing and thawing



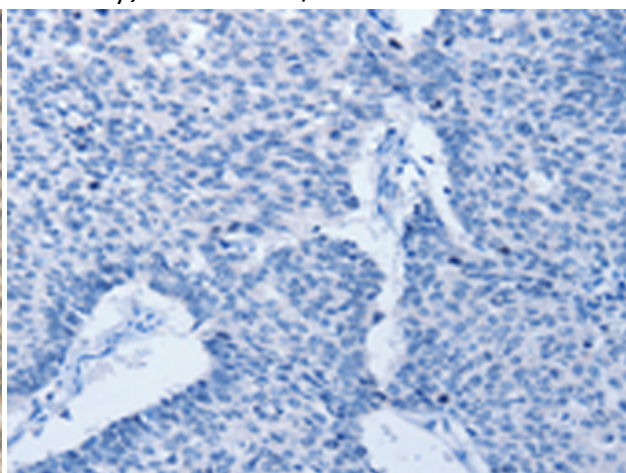
Immunohistochemistry analysis of paraffin embedded Human colon cancer tissue using 217018(ATG5 Antibody) at a dilution of 1/40(Cytoplasm).



In comparison with the IHC on the left, the same paraffin-embedded Human colon cancer tissue is first treated with the fusion protein and then with 217018(Anti-ATG5 Antibody) at dilution 1/40.



The image on the left is immunohistochemistry of paraffin-embedded Human lung cancer tissue using 217018(Anti-ATG5 Antibody) at a dilution of 1/40.



In comparison with the IHC on the left, the same paraffin-embedded Human lung cancer tissue is first treated with fusion protein and then with D221650(Anti-ATG5 Antibody) at dilution 1/40.