

## ATG4C RABBIT MAB

**Cat.#:** N261888

**Product Name:** Anti-ATG4C Rabbit Monoclonal Antibody

**Synonyms:** ATG4C; APG4C; AUTL1; AUTL3; Cysteine protease ATG4C; AUT-like 3 cysteine endopeptidase; Autophagin-3; Autophagy-related cysteine endopeptidase 3; Autophagy-related protein 4 homolog C

**UNIPROT ID:** Q96DT6

**Background:** Cysteine protease required for autophagy, which cleaves the C-terminal part of either MAP1LC3, GABARAPL2 or GABARAP, allowing the liberation of form I. A subpopulation of form I is subsequently converted to a smaller form (form II). Form II, with a revealed C-terminal glycine, is considered to be the phosphatidylethanolamine (PE)-conjugated form, and has the capacity for the binding to autophagosomes.

**Immunogen:** Recombinant protein of human ATG4C

**Applications:** WB,IHC-P

**Recommended Dilutions:** WB: 1/500-1/1000 IHC: 1/50-1/100

**Host Species:** Rabbit

**Clonality:** Rabbit Monoclonal

**Clone ID:** R08-8G9

**MW:** Calculated MW: 52 kDa; Observed MW: 52 kDa

**Isotype:** IgG

**Purification:** Affinity Purified

**Species Reactivity:** Human

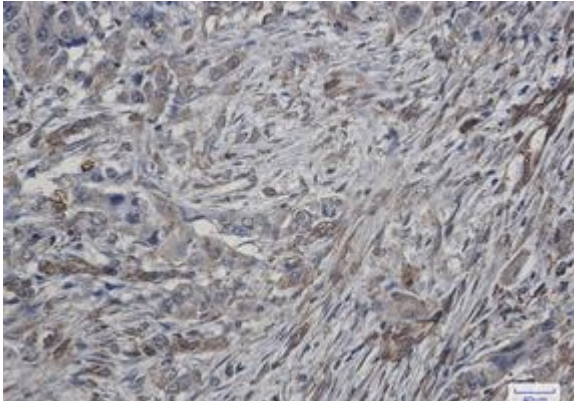
**Conjugation:** Unconjugated

**Modification:** Unmodified

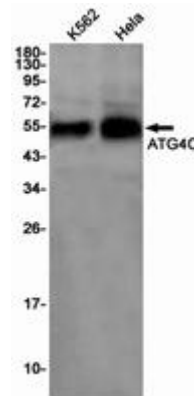
**Constituents:** PBS (without Mg<sup>2+</sup> and Ca<sup>2+</sup>), pH 7.3 containing 50% glycerol, 0.5% BSA and 0.02% sodium azide

**Research Areas:** Cell Biology

**Storage & Shipping:** Store at -20°C. Avoid repeated freezing and thawing



Immunohistochemistry analysis of paraffin-embedded Human lung cancer using ATG4C antibody. High-pressure and temperature Sodium Citrate pH 6.0 was used for antigen retrieval.



Western blot analysis of ATG4C in K562, HeLa lysates using ATG4C antibody.