

ATG16L1 RABBIT PAB

Cat.#: S221204

Product Name: Anti-ATG16L1 Rabbit Polyclonal Antibody

Synonyms: IBD10; WDR30; APG16L; ATG16A; ATG16L

UNIPROT ID: Q676U5 (Gene Accession - NP_110430)

Background: The protein encoded by this gene is part of a large protein complex that is necessary for autophagy, the major process by which intracellular components are targeted to lysosomes for degradation. Defects in this gene are a cause of susceptibility to inflammatory bowel disease type 10 (IBD10). Several transcript variants encoding different isoforms have been found for this gene.

Immunogen: Synthetic peptide of human ATG16L1

Applications: ELISA, WB, IHC

Recommended Dilutions: IHC: 30-150;WB: 500-2000;ELISA: 2000-5000

Host Species: Rabbit

Clonality: Rabbit Polyclonal

Isotype: Immunogen-specific rabbit IgG

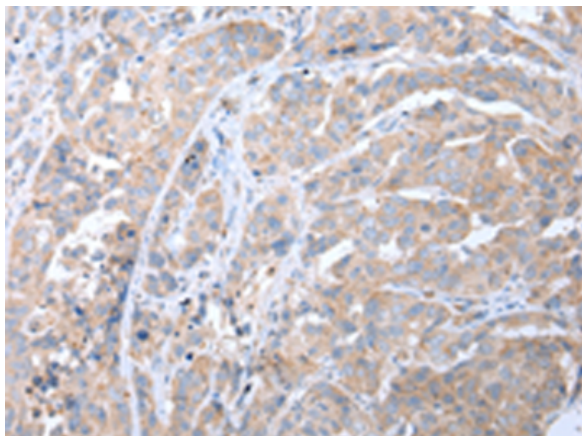
Purification: Antigen affinity purification

Species Reactivity: Human, Mouse

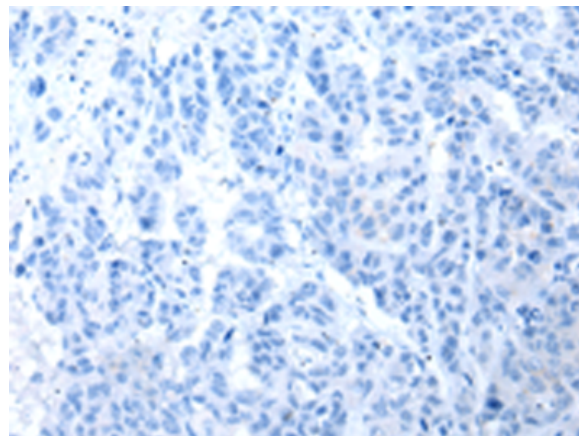
Constituents: PBS (without Mg²⁺ and Ca²⁺), pH 7.4, 150 mM NaCl, 0.05% Sodium Azide and 40% glycerol

Research Areas: Cancer, Cell Biology, Neuroscience, Cardiovascular

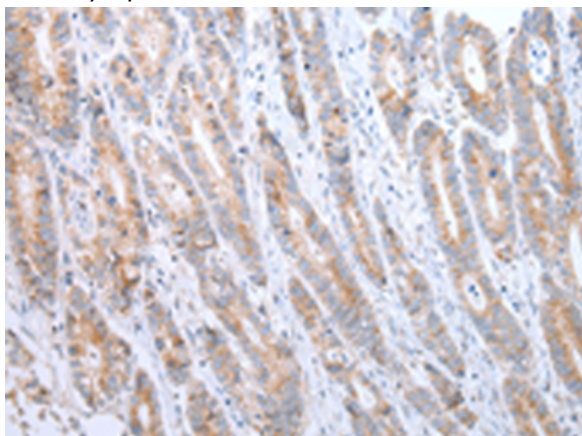
Storage & Shipping: Store at -20°C. Avoid repeated freezing and thawing



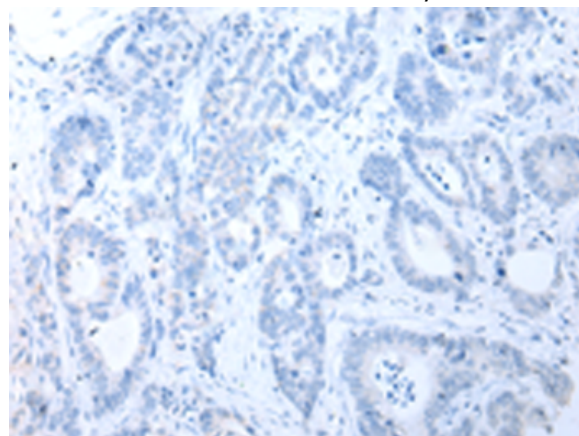
Immunohistochemistry analysis of paraffin embedded Human breast cancer tissue using 221204(ATG16L1 Antibody) at a dilution of 1/40(Cytoplasm).



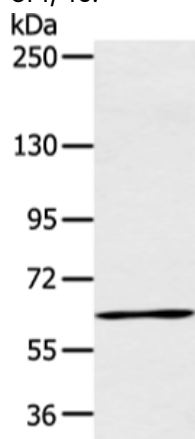
In comparison with the IHC on the left, the same paraffin-embedded Human breast cancer tissue is first treated with the synthetic peptide and then with 221204(Anti-ATG16L1 Antibody) at dilution 1/40.



The image on the left is immunohistochemistry of paraffin-embedded Human gastric cancer tissue using 221204(Anti-ATG16L1 Antibody) at a dilution of 1/40.



In comparison with the IHC on the left, the same paraffin-embedded Human gastric cancer tissue is first treated with synthetic peptide and then with D262704(Anti-ATG16L1 Antibody) at dilution 1/40.



Gel: 6%SDS-PAGE, Lysate: 40 µg;
 Lane: Raji cell;
 Primary antibody: 221204(ATG16L1 Antibody) at dilution 1/600;
 Secondary antibody: Goat anti rabbit IgG at 1/8000 dilution;
 Exposure time: 20 seconds



Product Description

Pioneering GTPase and Oncogene Product Development since 2010
