

ATG13 RABBIT PAB

Cat.#: S218735

Product Name: Anti-ATG13 Rabbit Polyclonal Antibody

Synonyms: KIAA0652; PARATARG8

UNIPROT ID: O75143 (Gene Accession - BC001331)

Background: The protein encoded by this gene is an autophagy factor and a target of the TOR kinase signaling pathway. The encoded protein is essential for autophagosome formation and mitophagy.

Immunogen: Fusion protein of human ATG13

Applications: ELISA, WB, IHC

Recommended Dilutions: IHC: 50-200;WB: 500-2000;ELISA: 2000-5000

Host Species: Rabbit

Clonality: Rabbit Polyclonal

Isotype: Immunogen-specific rabbit IgG

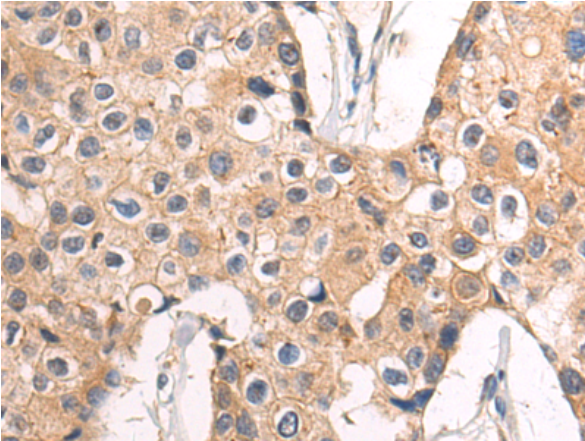
Purification: Antigen affinity purification

Species Reactivity: Human, Mouse

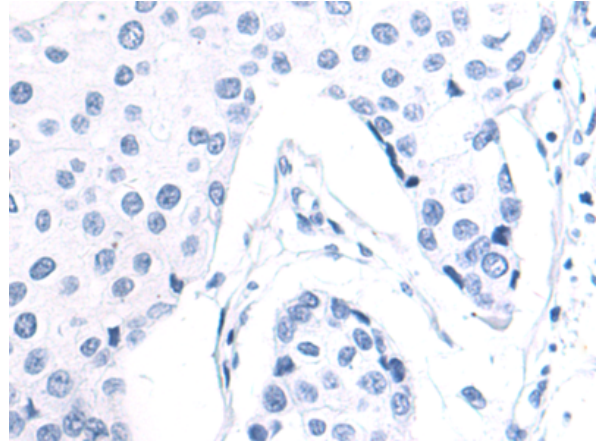
Constituents: PBS (without Mg²⁺ and Ca²⁺), pH 7.4, 150 mM NaCl, 0.05% Sodium Azide and 40% glycerol

Research Areas: Cancer

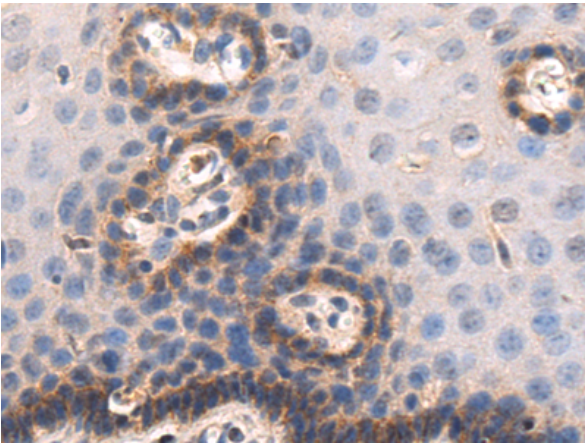
Storage & Shipping: Store at -20°C. Avoid repeated freezing and thawing



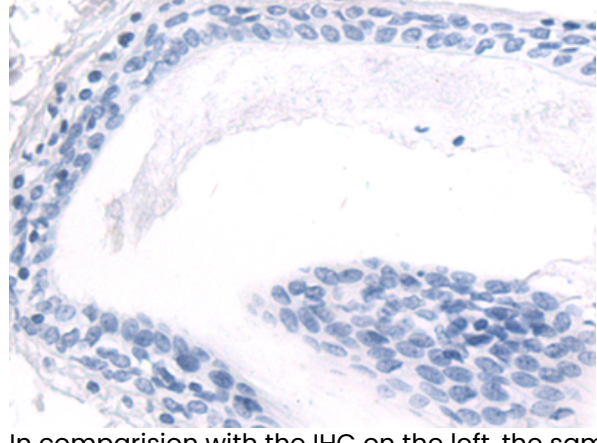
Immunohistochemistry analysis of paraffin embedded Human breast cancer tissue using 218735(ATG13 Antibody) at a dilution of 1/50(Cytoplasm).



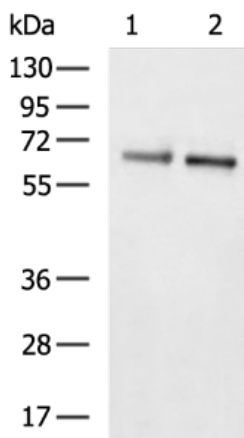
In comparison with the IHC on the left, the same paraffin-embedded Human breast cancer tissue is first treated with the fusion protein and then with 218735(Anti-ATG13 Antibody) at dilution 1/50.



The image on the left is immunohistochemistry of paraffin-embedded Human esophagus cancer tissue using 218735(Anti-ATG13 Antibody) at a dilution of 1/50.



In comparison with the IHC on the left, the same paraffin-embedded Human esophagus cancer tissue is first treated with fusion protein and then with D225082(Anti-ATG13 Antibody) at dilution 1/50.



Gel: 8%SDS-PAGE, Lysate: 40 µg;
Lane 1-2: NIH/3T3 cell, BGC-823 cell lysates;
Primary antibody: 218735(ATG13 Antibody) at dilution 1/600;
Secondary antibody: HRP-conjugated Goat anti rabbit IgG at 1/5000 dilution;
Exposure time: 15 seconds



Product Description

Pioneering GTPase and Oncogene Product Development since 2010
