

## ATG13 RABBIT MAB

**Cat.#:** N261586

**Product Name:** Anti-ATG13 Rabbit Monoclonal Antibody

**Synonyms:** Autophagy-related protein 13

**UNIPROT ID:** O75143

**Background:** Autophagy factor required for autophagosome formation and mitophagy.

**Immunogen:** Recombinant protein of human KIAA0652

**Applications:** WB,IP

**Recommended Dilutions:** WB: 1/500-1/1000 IP: 1/20

**Host Species:** Rabbit

**Clonality:** Rabbit Monoclonal

**Clone ID:** R08-8E8

**MW:** Calculated MW: 57 kDa; Observed MW: 72 kDa

**Isotype:** IgG

**Purification:** Affinity Purified

**Species Reactivity:** Human,Mouse,Rat

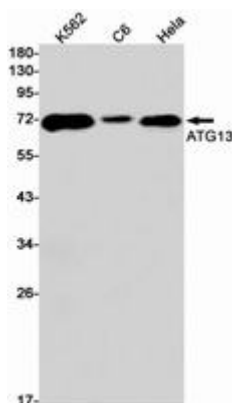
**Conjugation:** Unconjugated

**Modification:** Unmodified

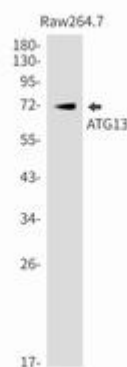
**Constituents:** PBS (without Mg<sup>2+</sup> and Ca<sup>2+</sup>), pH 7.3 containing 50% glycerol, 0.5% BSA and 0.02% sodium azide

**Research Areas:** Cell Biology

**Storage & Shipping:** Store at -20°C. Avoid repeated freezing and thawing



Western blot analysis of ATG13 in K562, C6, HeLa lysates using ATG13 antibody.



Western blot analysis of ATG13 in Raw264.7 lysates using ATG13 antibody.



# Product Description

Pioneering GTPase and Oncogene Product Development since 2010

---