

ASXL2 RABBIT PAB

Cat.#: S218337

Product Name: Anti-ASXL2 Rabbit Polyclonal Antibody

Synonyms: ASXH2

UNIPROT ID: Q76L83 (Gene Accession - BC042999)

Background: ASXL2 is a human homolog of the *Drosophila* *asx* gene. *Drosophila asx* is an enhancer of *trithorax* (see MIM 159555) and *polycomb* (see MIM 610231) (ETP) gene that encodes a chromatin protein with dual functions in transcriptional activation and silencing (Katoh and Katoh, 2003 [PubMed 12888926]).

Immunogen: Fusion protein of human ASXL2

Applications: ELISA, IHC

Recommended Dilutions: IHC: 25-100; ELISA: 5000-10000

Host Species: Rabbit

Clonality: Rabbit Polyclonal

Isotype: Immunogen-specific rabbit IgG

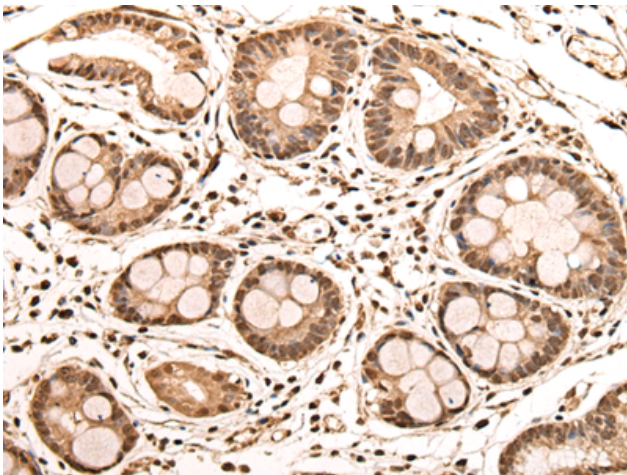
Purification: Antigen affinity purification

Species Reactivity: Human, Mouse

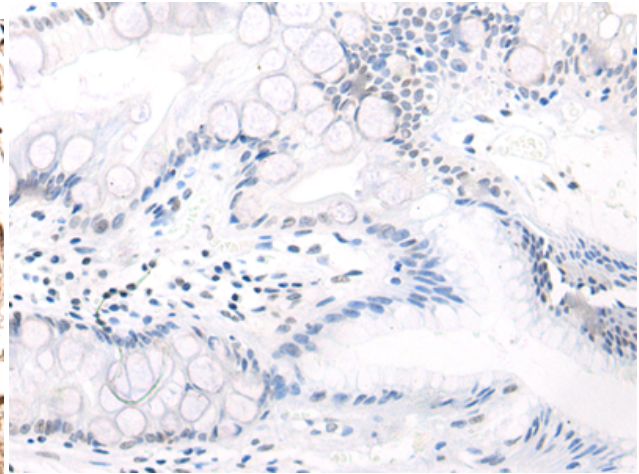
Constituents: PBS (without Mg²⁺ and Ca²⁺), pH 7.4, 150 mM NaCl, 0.05% Sodium Azide and 40% glycerol

Research Areas: Epigenetics and Nuclear Signaling

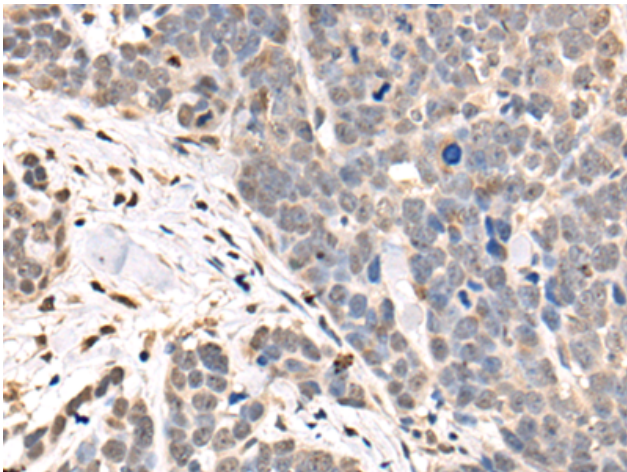
Storage & Shipping: Store at -20°C. Avoid repeated freezing and thawing



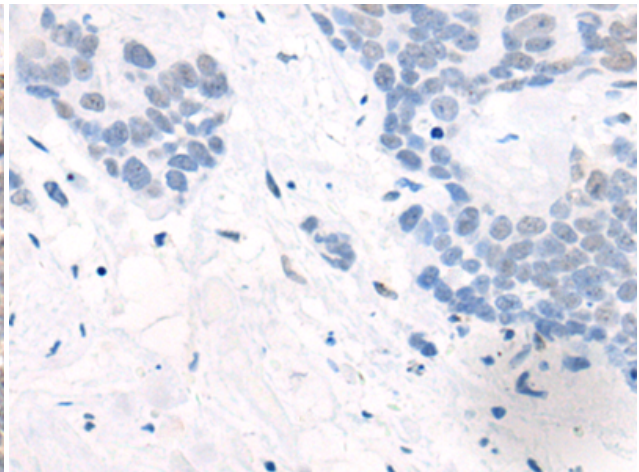
Immunohistochemistry analysis of paraffin embedded Human gastric cancer tissue using 218337(ASXL2 Antibody) at a dilution of 1/30(Nucleus).



In comparison with the IHC on the left, the same paraffin-embedded Human gastric cancer tissue is first treated with the fusion protein and then with 218337(Anti-ASXL2 Antibody) at dilution 1/30.



The image on the left is immunohistochemistry of paraffin-embedded Human thyroid cancer tissue using 218337(Anti-ASXL2 Antibody) at a dilution of 1/30.



In comparison with the IHC on the left, the same paraffin-embedded Human thyroid cancer tissue is first treated with fusion protein and then with D224200(Anti-ASXL2 Antibody) at dilution 1/30.