

ASTE1 RABBIT PAB

Cat.#: S219056

Product Name: Anti-ASTE1 Rabbit Polyclonal Antibody

Synonyms: HT001

UNIPROT ID: Q2TB18 (Gene Accession - BC030274)

Background: Possible role in EGF receptor signaling.

Immunogen: Fusion protein of human ASTE1

Applications: ELISA, WB, IHC

Recommended Dilutions: IHC: 50-300;WB: 500-2000;ELISA: 5000-10000

Host Species: Rabbit

Clonality: Rabbit Polyclonal

Isotype: Immunogen-specific rabbit IgG

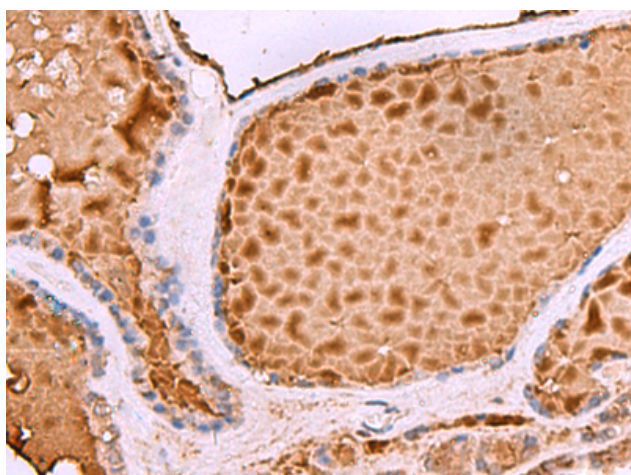
Purification: Antigen affinity purification

Species Reactivity: Human, Mouse

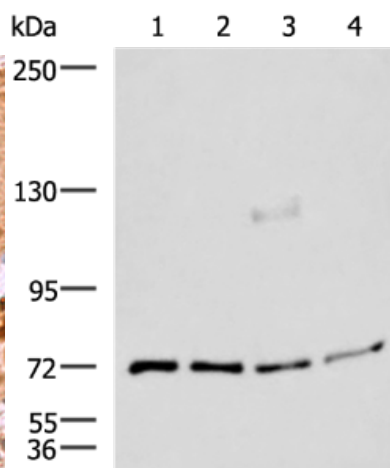
Constituents: PBS (without Mg²⁺ and Ca²⁺), pH 7.4, 150 mM NaCl, 0.05% Sodium Azide and 40% glycerol

Research Areas: Cell Biology

Storage & Shipping: Store at -20°C. Avoid repeated freezing and thawing



Immunohistochemistry analysis of paraffin-embedded Human thyroid cancer tissue using 219056(ASTE1 Antibody) at a dilution of 1/50(Cytoplasm).



Gel: 6%SDS-PAGE, Lysate: 40 µg;
Lane 1-4: A549, A172, TM4 and PC3 cell lysates;
Primary antibody: 219056(ASTE1 Antibody) at dilution 1/600;
Secondary antibody: HRP-conjugated Goat anti rabbit IgG at 1/5000 dilution;
Exposure time: 2 minutes