

## ASS1 RABBIT MAB

**Cat.#:** N261880

**Product Name:** Anti-ASS1 Rabbit Monoclonal Antibody

**Synonyms:** Argininosuccinate synthase 1; ASS; ass1; ASSA; Citrulline aspartate ligase; CTLN1

**UNIPROT ID:** P00966

**Background:** Amino-acid biosynthesis; L-arginine biosynthesis; L-arginine from L-ornithine and carbamoyl phosphate: step 2/3. Nitrogen metabolism; urea cycle; (N(omega)-L-arginino)succinate from L-aspartate and L-citrulline: step 1/1.

**Immunogen:** A synthetic peptide of human ASS1

**Applications:** WB,IHC-F,IHC-P,ICC/IF,IP

**Recommended Dilutions:** WB: 1/500-1/1000 IHC: 1/50-1/100 IF: 1/50-1/200 IP: 1/20

**Host Species:** Rabbit

**Clonality:** Rabbit Monoclonal

**Clone ID:** R02-7A8

**MW:** Calculated MW: 47 kDa; Observed MW: 47 kDa

**Isotype:** IgG

**Purification:** Affinity Purified

**Species Reactivity:** Human,Rat

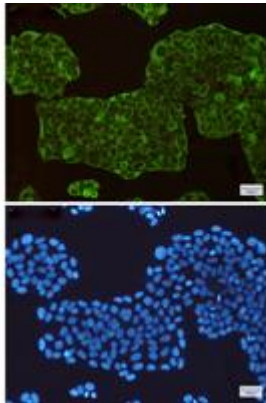
**Conjugation:** Unconjugated

**Modification:** Unmodified

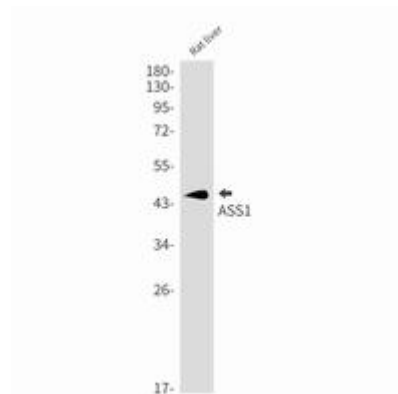
**Constituents:** PBS (without Mg<sup>2+</sup> and Ca<sup>2+</sup>), pH 7.3 containing 50% glycerol, 0.5% BSA and 0.02% sodium azide

**Research Areas:** Signal Transduction

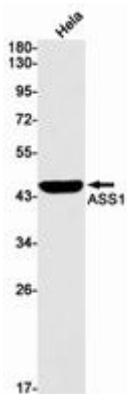
**Storage & Shipping:** Store at -20°C. Avoid repeated freezing and thawing



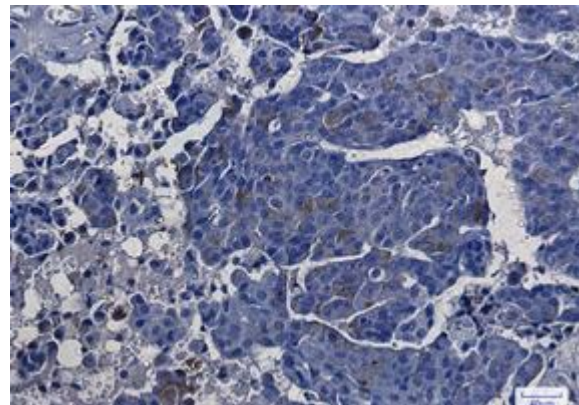
Immunocytochemistry analysis of ASS1(green) in HeLa using ASS1 antibody, and DAPI(blue)



Western blot analysis of ASS1 in rat liver lysates using ASS1 antibody.



Western blot analysis of ASS1 in HeLa lysates using ASS1 antibody.



Immunohistochemistry analysis of paraffin-embedded Human breast cancer using ASS1 antibody. High-pressure and temperature Sodium Citrate pH 6.0 was used for antigen retrieval.