

ASMTL RABBIT PAB

Cat.#: S218761

Product Name: Anti-ASMTL Rabbit Polyclonal Antibody

Synonyms: ASMTL; ASMTLX; ASMTLY

UNIPROT ID: O95671 (Gene Accession - BC002508)

Background: The protein encoded by this gene has an N-terminus that is similar to the multicopy associated filamentation (maf) protein of *Bacillus subtilis* and to orfE of *Escherichia coli*, while the C-terminus is similar to N-acetylserotonin O-methyltransferase. This gene is located in the pseudoautosomal region 1 (PAR1) of X and Y chromosomes. Three transcript variants encoding different isoforms have been found for this gene.

Immunogen: Fusion protein of human ASMTL

Applications: ELISA, IHC

Recommended Dilutions: IHC: 100-300; ELISA: 5000-10000

Host Species: Rabbit

Clonality: Rabbit Polyclonal

Isotype: Immunogen-specific rabbit IgG

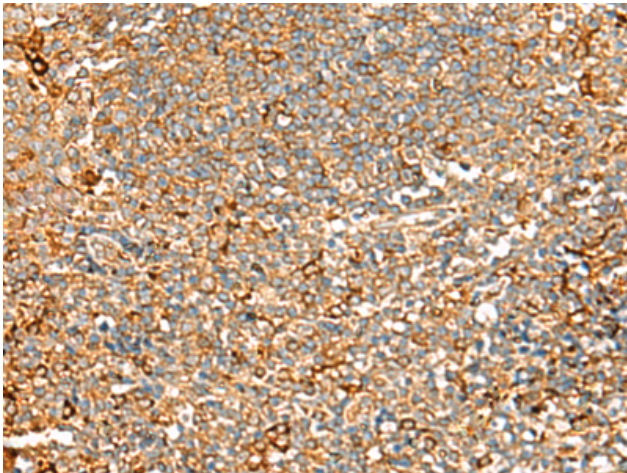
Purification: Antigen affinity purification

Species Reactivity: Human

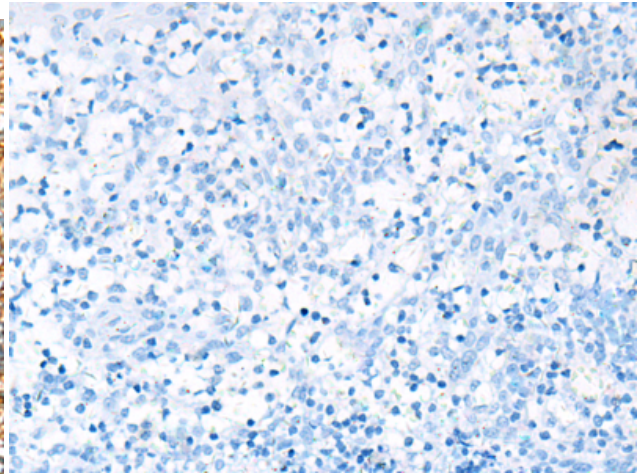
Constituents: PBS (without Mg²⁺ and Ca²⁺), pH 7.4, 150 mM NaCl, 0.05% Sodium Azide and 40% glycerol

Research Areas: Cell Biology

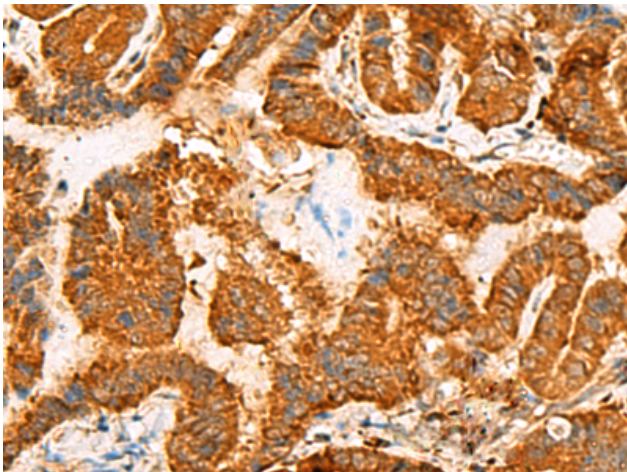
Storage & Shipping: Store at -20°C. Avoid repeated freezing and thawing



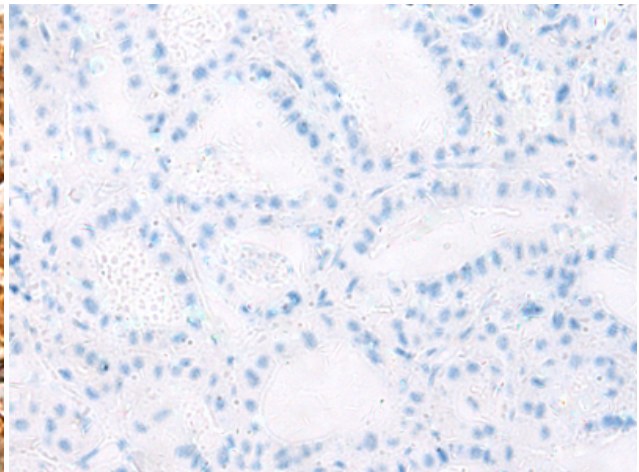
Immunohistochemistry analysis of paraffin embedded Human tonsil tissue using 218761(ASMTL Antibody) at a dilution of 1/100(Cytoplasm).



In comparison with the IHC on the left, the same paraffin-embedded Human tonsil tissue is first treated with the fusion protein and then with 218761(Anti-ASMTL Antibody) at dilution 1/100.



The image on the left is immunohistochemistry of paraffin-embedded Human thyroid cancer tissue using 218761(Anti-ASMTL Antibody) at a dilution of 1/100.



In comparison with the IHC on the left, the same paraffin-embedded Human thyroid cancer tissue is first treated with fusion protein and then with D225126(Anti-ASMTL Antibody) at dilution 1/100.