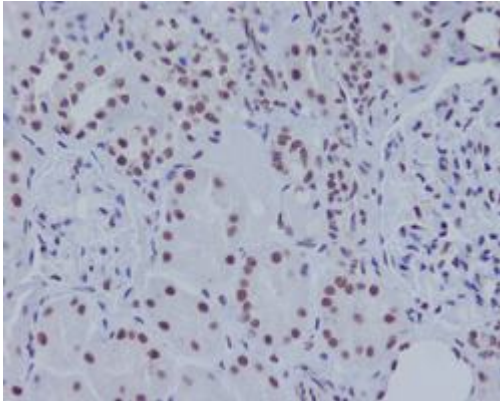
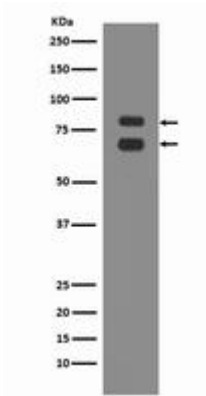


ASH2L RABBIT PAB**Cat.#:** N225644**Product Name:** Anti-ASH2L Rabbit pAb**Synonyms:** ASH2; Bre2; ASH2L1; ASH2L2**UNIPROT ID:** Q9UBL3**Background:** Component of the Set1/Ash2 histone methyltransferase (HMT) complex, a complex that specifically methylates 'Lys-4' of histone H3, but not if the neighboring 'Lys-9' residue is already methylated. As part of the MLL1/MLL complex it is involved in methylation and dimethylation at 'Lys-4' of histone H3. May function as a transcriptional regulator. May play a role in hematopoiesis.**Immunogen:** A synthesized peptide derived from human ASH2L**Applications:** WB,IHC-P,ICC/IF**Recommended Dilutions:** WB: 1/500-1/1000 IHC: 1/50-1/100 IF: 1/50-1/200**Host Species:** Rabbit**Clonality:** Rabbit Polyclonal**Clone ID:** -**MW:** Calculated MW: 69 kDa; Observed MW: 69 kDa**Isotype:** IgG**Purification:** Affinity Chromatography**Species Reactivity:** Human,Mouse,Rat**Conjugation:** Unconjugated**Modification:** Unmodified**Constituents:** PBS (without Mg²⁺ and Ca²⁺), pH 7.3 containing 50% glycerol, 0.5% BSA and 0.02% sodium azide**Research Areas:** Epigenetics and Nuclear Signaling**Storage & Shipping:** Store at -20°C. Avoid repeated freezing and thawing



Immunohistochemistry analysis of paraffin-embedded Human kidney using ASH2L antibody. High- pressure and temperature Sodium Citrate pH 6.0 was used for antigen retrieval.



Western blot analysis of ASH2L in Sodium K562 lysates using ASH2L antibody.