

ASH2L RABBIT MAB

Cat.#: N261877

Product Name: Anti-ASH2L Rabbit Monoclonal Antibody

Synonyms: ASH2; Bre2; ASH2L1; ASH2L2

UNIPROT ID: Q9UBL3

Background: Component of the Set1/Ash2 histone methyltransferase (HMT) complex, a complex that specifically methylates 'Lys-4' of histone H3, but not if the neighboring 'Lys-9' residue is already methylated. As part of the MLL1/MLL complex it is involved in methylation and dimethylation at 'Lys-4' of histone H3. May function as a transcriptional regulator. May play a role in hematopoiesis.

Immunogen: A synthetic peptide of human ASH2L

Applications: WB,IHC-F,IHC-P,ICC/IF

Recommended Dilutions: WB: 1/500-1/1000 IHC: 1/50-1/100 IF: 1/50-1/200

Host Species: Rabbit

Clonality: Rabbit Monoclonal

Clone ID: R05-7E1

MW: Calculated MW: 69 kDa; Observed MW: 80 kDa

Isotype: IgG

Purification: Affinity Purified

Species Reactivity: Human,Mouse,Rat

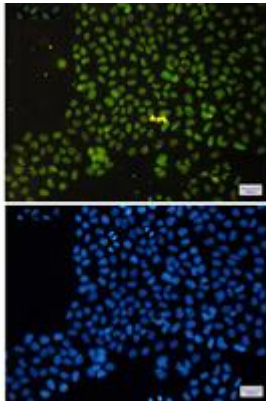
Conjugation: Unconjugated

Modification: Unmodified

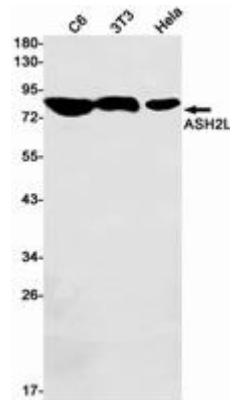
Constituents: PBS (without Mg²⁺ and Ca²⁺), pH 7.3 containing 50% glycerol, 0.5% BSA and 0.02% sodium azide

Research Areas: Epigenetics and Nuclear Signaling

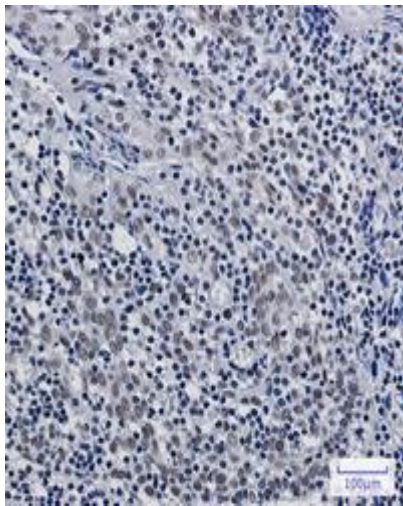
Storage & Shipping: Store at -20°C. Avoid repeated freezing and thawing



Immunocytochemistry analysis of ASH2L (green) in Hela using ASH2L antibody, and DAPI (blue)



Western blot analysis of ASH2L in C6, 3T3, Hela lysates using ASH2L antibody.



Immunohistochemistry analysis of paraffin-embedded Human tonsil using ASH2L antibody. High-pressure and temperature Sodium Citrate pH 6.0 was used for antigen retrieval.