

ASB8 RABBIT PAB

Cat.#: S217169

Product Name: Anti-ASB8 Rabbit Polyclonal Antibody

Synonyms: PP14212

UNIPROT ID: Q9H765 (Gene Accession - BC001321)

Background: ASB-8 (ankyrin repeat and SOCS box-containing 8) is a 288 amino acid member of the ASB family that contains one SOCS box domain and four ANK repeats. Localized to the cytoplasm, ASB-8 functions as a substrate-recognition component of an E3 ubiquitin-protein ligase complex and, working in conjunction with other proteins, plays a role in the ubiquitination and subsequent proteasomal degradation of target proteins. The highest level of ASB-8 expression has been detected in skeletal muscle. ASB-8 is also expressed in heart, brain, placenta, liver, kidney and pancreas.

Immunogen: Fusion protein of human ASB8

Applications: ELISA, IHC

Recommended Dilutions: IHC: 25-100; ELISA: 2000-5000

Host Species: Rabbit

Clonality: Rabbit Polyclonal

Isotype: Immunogen-specific rabbit IgG

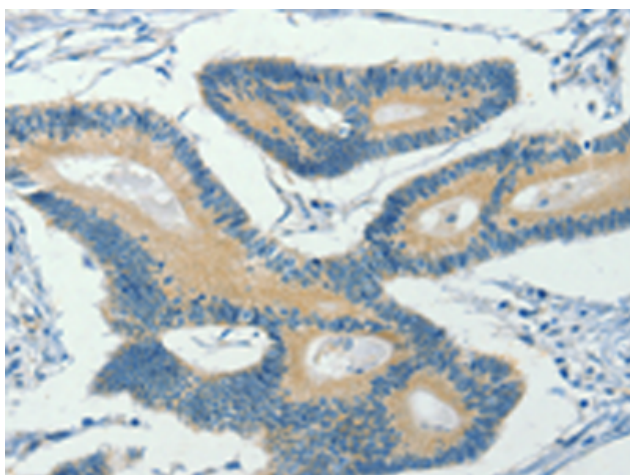
Purification: Antigen affinity purification

Species Reactivity: Human, Mouse

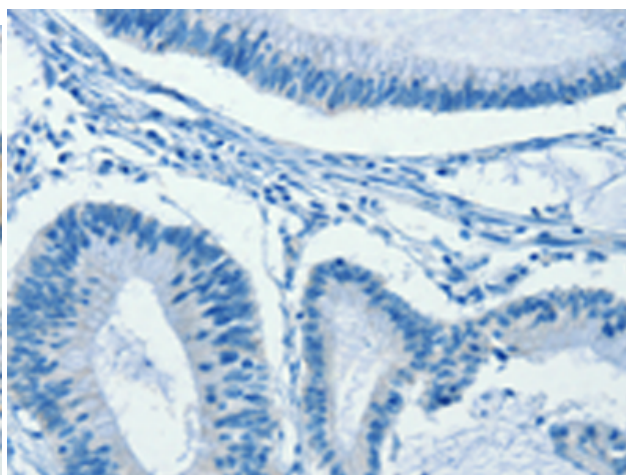
Constituents: PBS (without Mg²⁺ and Ca²⁺), pH 7.4, 150 mM NaCl, 0.05% Sodium Azide and 40% glycerol

Research Areas: Cell Biology

Storage & Shipping: Store at -20°C. Avoid repeated freezing and thawing



Immunohistochemistry analysis of paraffin embedded Human colon cancer tissue using 217169(ASB8 Antibody) at a dilution of 1/30(Cytoplasm).



In comparison with the IHC on the left, the same paraffin-embedded Human colon cancer tissue is first treated with the fusion protein and then with 217169(Anti-ASB8 Antibody) at dilution 1/30.