

## ASAH3L RABBIT PAB

**Cat.#:** N225046

**Product Name:** Anti-ASAH3L Rabbit pAb

**Synonyms:** ACER2; ASAH3L; PPI1646; Alkaline ceramidase 2; AlkCDase 2; Alkaline CDase 2; haCER2; Acylsphingosine deacylase 3-like; N-acylsphingosine amidohydrolase 3-like

**UNIPROT ID:** Q5QJU3

**Background:** Golgi ceramidase that catalyzes the hydrolysis of ceramides into sphingoid bases like sphingosine and free fatty acids at alkaline pH.

**Immunogen:** Synthesized peptide derived from ASAH3L . at AA range: 50-130

**Applications:** WB,IHC-P,ELISA

**Recommended Dilutions:** WB: 1/500-1/1000 IHC: 1/50-1/100 ELISA: 1/10000

**Host Species:** Rabbit

**Clonality:** Rabbit Polyclonal

**Clone ID:** -

**MW:** Calculated MW: 31 kDa; Observed MW: 31 kDa

**Isotype:** IgG

**Purification:** Affinity Purified

**Species Reactivity:** Human,Mouse

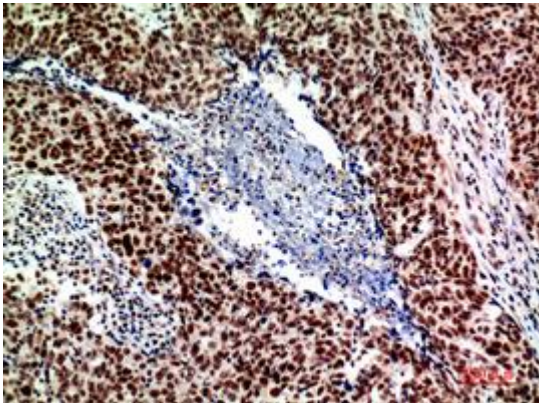
**Conjugation:** Unconjugated

**Modification:** Unmodified

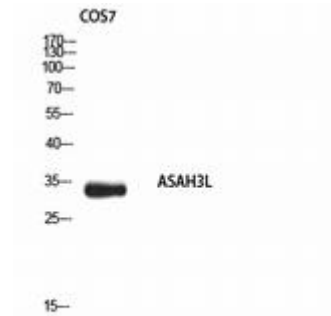
**Constituents:** PBS (without Mg<sup>2+</sup> and Ca<sup>2+</sup>), pH 7.3 containing 50% glycerol, 0.5% BSA and 0.02% sodium azide

**Research Areas:** Signal Transduction

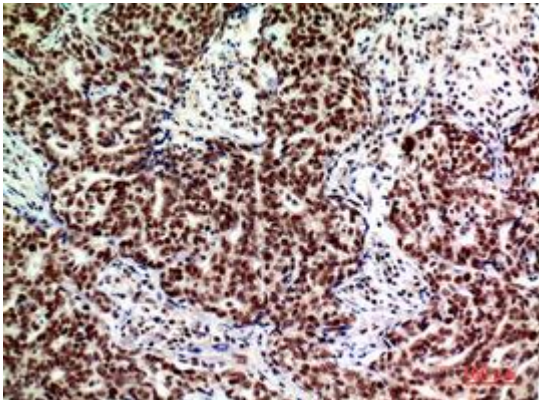
**Storage & Shipping:** Store at -20°C. Avoid repeated freezing and thawing



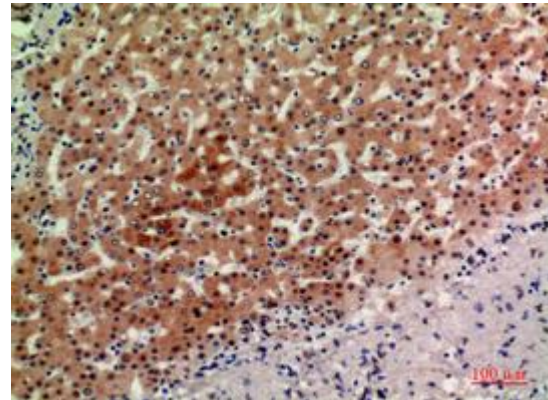
Immunohistochemistry analysis of paraffin-embedded Human breastcancer using ASA3L antibody. High-pressure and temperature Sodium Citrate pH 6.0 was used for antigen retrieval.



Western blot analysis of ASA3L in COS7 lysates using ASA3L antibody.



Immunohistochemistry analysis of paraffin-embedded Human breastcancer using ASA3L antibody. High-pressure and temperature Sodium Citrate pH 6.0 was used for antigen retrieval.



Immunohistochemistry analysis of paraffin-embedded Human liver using ASA3L antibody. High-pressure and temperature Sodium Citrate pH 6.0 was used for antigen retrieval.