

## AS160 RABBIT MAB

**Cat.#:** N261876

**Product Name:** Anti-AS160 Rabbit Monoclonal Antibody

**Synonyms:** AS160; NIDDM5

**UNIPROT ID:** O60343

**Background:** May act as a GTPase-activating protein for RAB2A, RAB8A, RAB10 and RAB14. Isoform 2 promotes insulin-induced glucose transporter SLC2A4/GLUT4 translocation at the plasma membrane, thus increasing glucose uptake.

**Immunogen:** Recombinant protein of human AS160

**Applications:** WB,IP

**Recommended Dilutions:** WB: 1/500-1/1000 IP: 1/20

**Host Species:** Rabbit

**Clonality:** Rabbit Monoclonal

**Clone ID:** R07-3H7

**MW:** Calculated MW: 147 kDa; Observed MW: 160 kDa

**Isotype:** IgG

**Purification:** Affinity Purified

**Species Reactivity:** Human

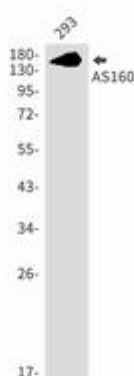
**Conjugation:** Unconjugated

**Modification:** Unmodified

**Constituents:** PBS (without Mg<sup>2+</sup> and Ca<sup>2+</sup>), pH 7.3 containing 50% glycerol, 0.5% BSA and 0.02% sodium azide

**Research Areas:** Signal Transduction

**Storage & Shipping:** Store at -20°C. Avoid repeated freezing and thawing



Western blot analysis of AS160 in 293 lysates using AS160 antibody.



# Product Description

Pioneering GTPase and Oncogene Product Development since 2010

---