

ARTEMIN RABBIT MAB

Cat.#: N261873

Product Name: Anti-Artemin Rabbit Monoclonal Antibody

Synonyms: Enovin; Neublascin

UNIPROT ID: Q5T4W7

Background: Ligand for the GFR- α -3-RET receptor complex but can also activate the GFR- α -1-RET receptor complex. Supports the survival of sensory and sympathetic peripheral neurons in culture and also supports the survival of dopaminergic neurons of the ventral mid-brain. Strong attractant of gut hematopoietic cells thus promoting the formation Peyer's patch-like structures, a major component of the gut-associated lymphoid tissue.

Immunogen: A synthetic peptide of human Artemin

Applications: WB,IHC-P,IP

Recommended Dilutions: WB: 1/500-1/1000 IHC: 1/50-1/100 IP: 1/20

Host Species: Rabbit

Clonality: Rabbit Monoclonal

Clone ID: R06-6F8

MW: Calculated MW: 23 kDa; Observed MW: 23 kDa

Isotype: IgG

Purification: Affinity Purified

Species Reactivity: Human,Mouse,Rat

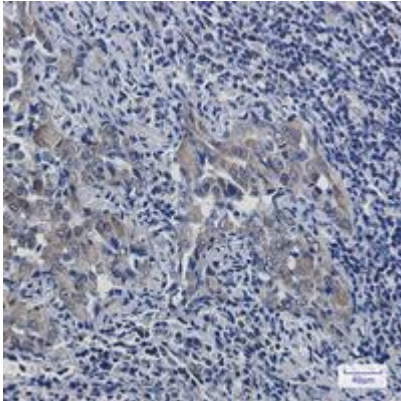
Conjugation: Unconjugated

Modification: Unmodified

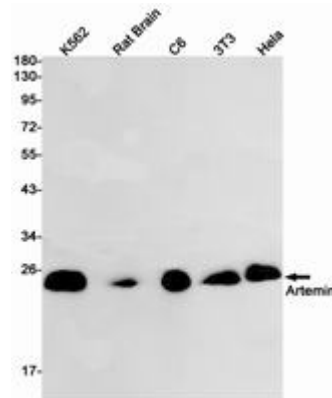
Constituents: PBS (without Mg²⁺ and Ca²⁺), pH 7.3 containing 50% glycerol, 0.5% BSA and 0.02% sodium azide

Research Areas: Neuroscience

Storage & Shipping: Store at -20°C. Avoid repeated freezing and thawing



Immunohistochemistry analysis of paraffin-embedded Human lung cancer using Artemin antibody. High-pressure and temperature Sodium Citrate pH 6.0 was used for antigen retrieval.



Western blot analysis of Artemin in K562, rat Brain, C6, 3T3, HeLa lysates using Artemin antibody.