

## ARMT1 RABBIT PAB

**Cat.#:** S219391

**Product Name:** Anti-ARMT1 Rabbit Polyclonal Antibody

**Synonyms:** C6orf211

**UNIPROT ID:** Q9H993 (Gene Accession - BC011348 )

**Background:** O-methyltransferase that methylates glutamate residues of target proteins to form gamma-glutamyl methyl ester residues. Methylates PCNA, suggesting it is involved in the DNA damage response.

**Immunogen:** Fusion protein of human ARMT1

**Applications:** ELISA, IHC

**Recommended Dilutions:** IHC: 200-300; ELISA: 5000-10000

**Host Species:** Rabbit

**Clonality:** Rabbit Polyclonal

**Isotype:** Immunogen-specific rabbit IgG

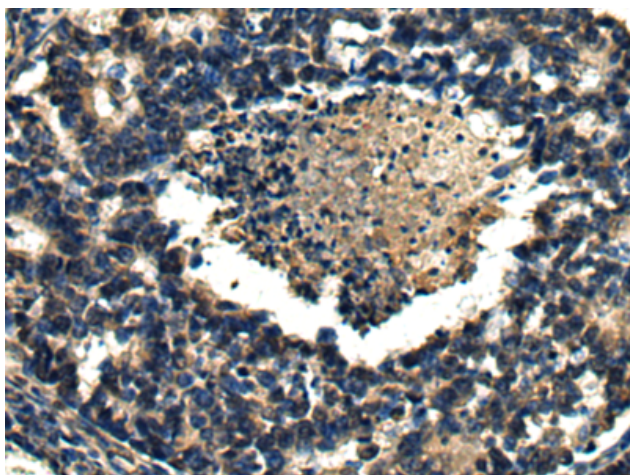
**Purification:** Antigen affinity purification

**Species Reactivity:** Human

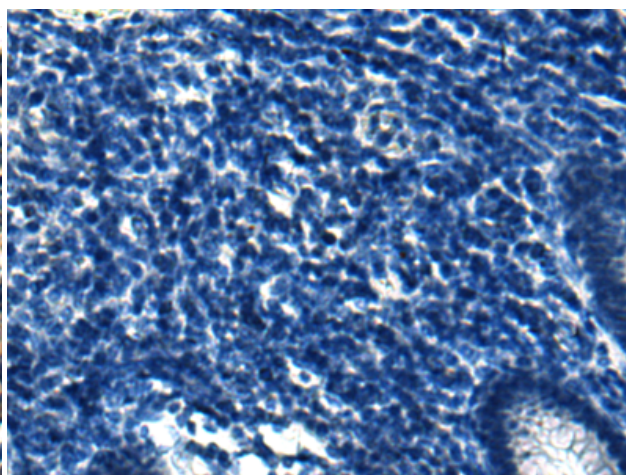
**Constituents:** PBS (without Mg<sup>2+</sup> and Ca<sup>2+</sup>), pH 7.4, 150 mM NaCl, 0.05% Sodium Azide and 40% glycerol

**Research Areas:** Cell Biology

**Storage & Shipping:** Store at -20°C. Avoid repeated freezing and thawing



Immunohistochemistry analysis of paraffin embedded Human colorectal cancer tissue using 219391 (ARMT1 Antibody) at a dilution of 1/180 (Cytoplasm).



In comparison with the IHC on the left, the same paraffin-embedded Human colorectal cancer tissue is first treated with the fusion protein and then with 219391 (Anti-ARMT1 Antibody) at dilution 1/180.