

ARL8A RABBIT PAB

Cat.#: S217045

Product Name: Anti-ARL8A Rabbit Polyclonal Antibody

Synonyms: GIE2; ARL10B

UNIPROT ID: Q96BM9 (Gene Accession - BC015408)

Background: Enables GTP binding activity. Predicted to be involved in chromosome segregation. Located in cytoplasm; midbody; and spindle midzone. [provided by Alliance of Genome Resources, Apr 2022]

Immunogen: Fusion protein of human ARL8A

Applications: ELISA, IHC

Recommended Dilutions: IHC: 50-200; ELISA: 5000-10000

Host Species: Rabbit

Clonality: Rabbit Polyclonal

Isotype: Immunogen-specific rabbit IgG

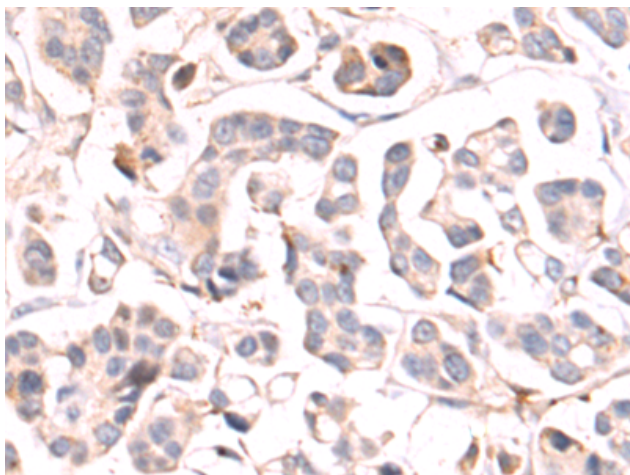
Purification: Antigen affinity purification

Species Reactivity: Human, Mouse

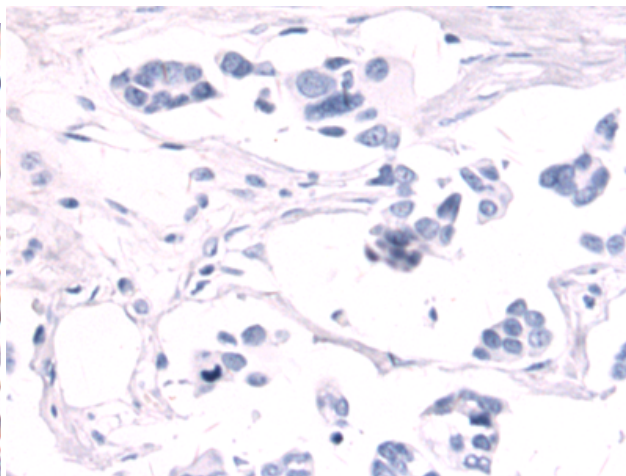
Constituents: PBS (without Mg²⁺ and Ca²⁺), pH 7.4, 150 mM NaCl, 0.05% Sodium Azide and 40% glycerol

Research Areas: Signal Transduction

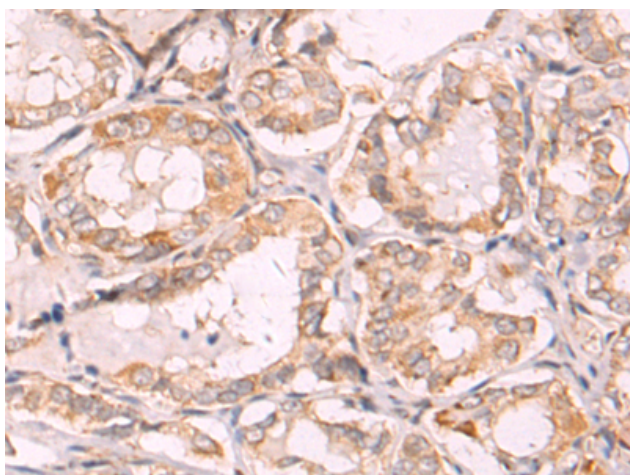
Storage & Shipping: Store at -20°C. Avoid repeated freezing and thawing



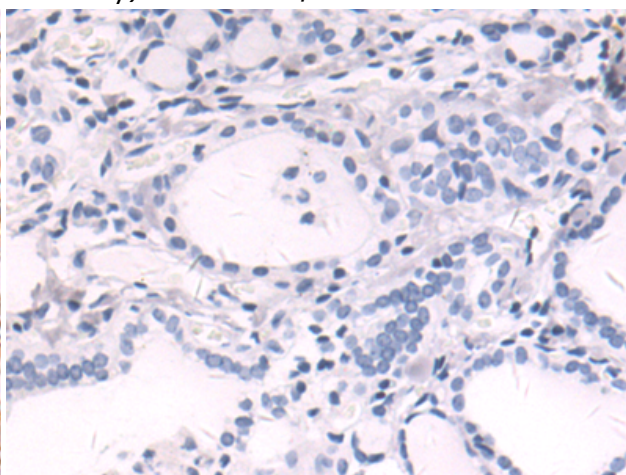
Immunohistochemistry analysis of paraffin-embedded Human colorectal cancer tissue using 217045 (ARL8A Antibody) at a dilution of 1/80 (Cytoplasm).



In comparison with the IHC on the left, the same paraffin-embedded Human colorectal cancer tissue is first treated with the fusion protein and then with 217045 (Anti-ARL8A Antibody) at dilution 1/80.



The image on the left is immunohistochemistry of paraffin-embedded Human thyroid cancer tissue using 217045 (Anti-ARL8A Antibody) at a dilution of 1/80.



In comparison with the IHC on the left, the same paraffin-embedded Human thyroid cancer tissue is first treated with fusion protein and then with D221699 (Anti-ARL8A Antibody) at dilution 1/80.