

ARL6 RABBIT PAB

Cat.#: S216350

Product Name: Anti-ARL6 Rabbit Polyclonal Antibody

Synonyms: BBS3; RP55

UNIPROT ID: Q9H0F7 (Gene Accession - BC024239)

Background: The protein encoded by this gene belongs to the ARF-like (ADP ribosylation factor-like) sub-family of the ARF family of GTP-binding proteins which are involved in regulation of intracellular traffic. Mutations in this gene are associated with Bardet-Biedl syndrome (BBS). A vision-specific transcript, encoding long isoform BBS3L, has been described (PMID: 20333246).

Immunogen: Fusion protein of human ARL6

Applications: ELISA, IHC

Recommended Dilutions: IHC: 50-200; ELISA: 5000-10000

Host Species: Rabbit

Clonality: Rabbit Polyclonal

Isotype: Immunogen-specific rabbit IgG

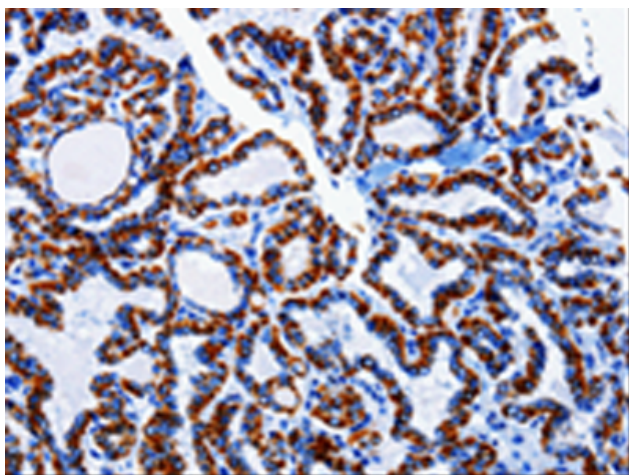
Purification: Antigen affinity purification

Species Reactivity: Human, Mouse

Constituents: PBS (without Mg²⁺ and Ca²⁺), pH 7.4, 150 mM NaCl, 0.05% Sodium Azide and 40% glycerol

Research Areas: Signal Transduction

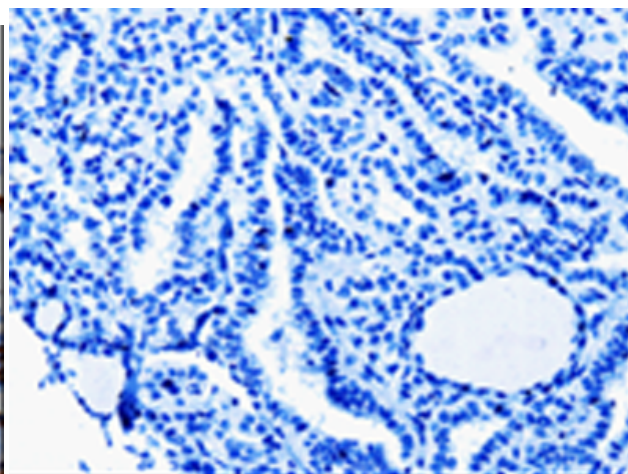
Storage & Shipping: Store at -20°C. Avoid repeated freezing and thawing



Immunohistochemistry analysis of paraffin embedded Human liver cancer tissue using 216350(ARL6 Antibody) at a dilution of 1/80(Cytoplasm).



The image on the left is immunohistochemistry of paraffin-embedded Human bladder cancer tissue using 216350(Anti-ARL6 Antibody) at a dilution of 1/80.



In comparison with the IHC on the left, the same paraffin-embedded Human liver cancer tissue is first treated with the fusion protein and then with 216350(Anti-ARL6 Antibody) at dilution 1/80.



In comparison with the IHC on the left, the same paraffin-embedded Human bladder cancer tissue is first treated with fusion protein and then with D220260(Anti-ARL6 Antibody) at dilution 1/80.



Product Description

Pioneering GTPase and Oncogene Product Development since 2010
