

## ARIH1 RABBIT PAB

**Cat.#:** S215541

**Product Name:** Anti-ARIH1 Rabbit Polyclonal Antibody

**Synonyms:** ARI; HARI; HHARI; UBCH7BP

**UNIPROT ID:** Q9Y4X5 (Gene Accession - NP\_005735 )

**Background:** ARIH1 (ariadne homolog), also known as ubiquitin conjugating enzyme E2 binding protein 1, ARI, HARI, HHARI (human homolog of Drosophila ariadne), MOP-6 (monocyte protein 6) or UBCH7BP (UBCH7 binding protein), is a 557 amino acid cytoplasmic protein. Expressed in a wide variety of tissues, ARIH1 contains two RING-type zinc fingers and one IBR (in-between RING fingers)-type domain. ARIH1 is believed to be involved in protein degradation and protein translation. ARIH1 interacts with UBCH7 and is thought to function as an E3 ubiquitin-protein ligase (or as a component of an E3 complex) that, characteristic of E3 ligase proteins, accepts ubiquitin (in the form of a thioester) from an E2 ubiquitin-conjugating enzyme (UBCH7) and transfers that ubiquitin residue to substrates targeted for degradation. Specifically, ARIH1 interacts with and polyubiquitylates eIF4E2, thereby targeting it for proteasomal degradation.

**Immunogen:** Synthetic peptide of human ARIH1

**Applications:** ELISA, IHC

**Recommended Dilutions:** IHC: 50-100; ELISA: 5000-10000

**Host Species:** Rabbit

**Clonality:** Rabbit Polyclonal

**Isotype:** Immunogen-specific rabbit IgG

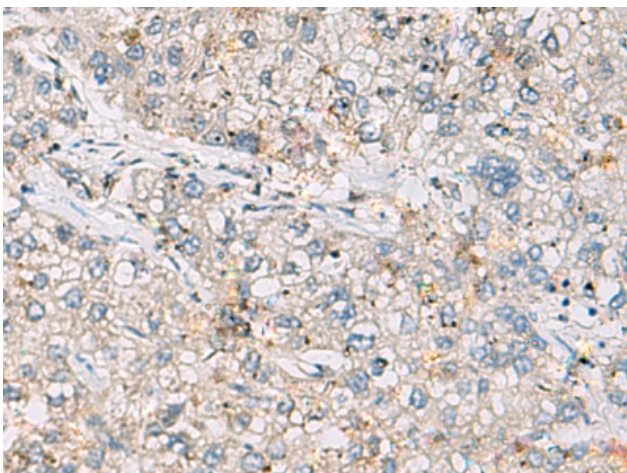
**Purification:** Antigen affinity purification

**Species Reactivity:** Human, Mouse

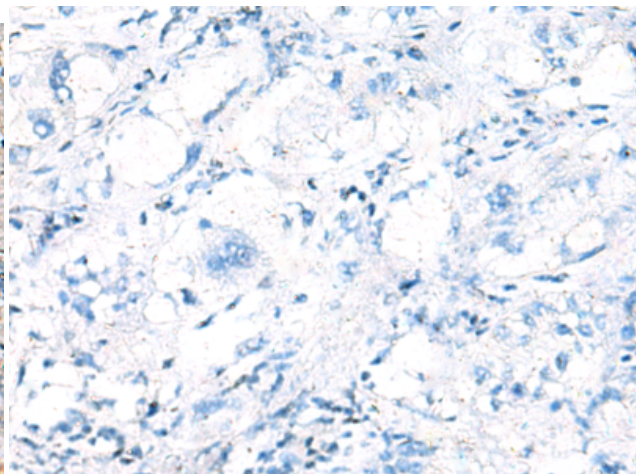
**Constituents:** PBS (without Mg<sup>2+</sup> and Ca<sup>2+</sup>), pH 7.4, 150 mM NaCl, 0.05% Sodium Azide and 40% glycerol

**Research Areas:** Metabolism, Cell Biology

**Storage & Shipping:** Store at -20°C. Avoid repeated freezing and thawing



Immunohistochemistry analysis of paraffin embedded Human liver cancer tissue using 215541(ARIH1 Antibody) at a dilution of 1/30(Cytoplasm).



In comparison with the IHC on the left, the same paraffin-embedded Human liver cancer tissue is first treated with the synthetic peptide and then with 215541(Anti-ARIH1 Antibody) at dilution 1/30.



# Product Description

Pioneering GTPase and Oncogene Product Development since 2010

---