

## ARFRP1 RABBIT MAB

**Cat.#:** N261581

**Product Name:** Anti-ARFRP1 Rabbit Monoclonal Antibody

**Synonyms:** ARP; Arp1; ARL18

**UNIPROT ID:** Q13795

**Background:** Trans-Golgi-associated GTPase that regulates protein sorting.

**Immunogen:** A synthetic peptide of human ARFRP1

**Applications:** WB,IP

**Recommended Dilutions:** WB: 1/500-1/1000 IP: 1/20

**Host Species:** Rabbit

**Clonality:** Rabbit Monoclonal

**Clone ID:** R08-5C5

**MW:** Calculated MW: 23 kDa; Observed MW: 23 kDa

**Isotype:** IgG

**Purification:** Affinity Purified

**Species Reactivity:** Rat

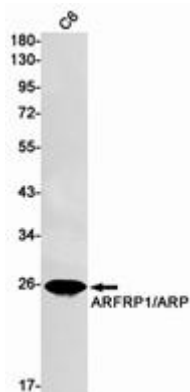
**Conjugation:** Unconjugated

**Modification:** Unmodified

**Constituents:** PBS (without Mg<sup>2+</sup> and Ca<sup>2+</sup>), pH 7.3 containing 50% glycerol, 0.5% BSA and 0.02% sodium azide

**Research Areas:** Signal Transduction

**Storage & Shipping:** Store at -20°C. Avoid repeated freezing and thawing



Western blot analysis of ARFRP1/ARP in C6 lysates using ARFRP1 antibody.