

ARFGAP1 RABBIT PAB

Cat.#: S217031

Product Name: Anti-ARFGAP1 Rabbit Polyclonal Antibody

Synonyms: ARFIGAP; HRIHFB2281

UNIPROT ID: Q8N6T3 (Gene Accession - BC028233)

Background: The protein encoded by this gene is a GTPase-activating protein (GAP) which associates with the Golgi apparatus and which interacts with ADP-ribosylation factor 1 (ARF1). The encoded protein promotes hydrolysis of ARF1-bound GTP and is required for the dissociation of coat proteins from Golgi-derived membranes and vesicles. Dissociation of the coat proteins is required for the fusion of these vesicles with target compartments. The activity of this protein is stimulated by phosphoinositides and inhibited by phosphatidylcholine. Two transcript variants encoding different isoforms have been found for this gene.

Immunogen: Fusion protein of human ARFGAP1

Applications: ELISA, WB, IHC

Recommended Dilutions: IHC: 25-100;WB: 1000-5000;ELISA: 2000-10000

Host Species: Rabbit

Clonality: Rabbit Polyclonal

Isotype: Immunogen-specific rabbit IgG

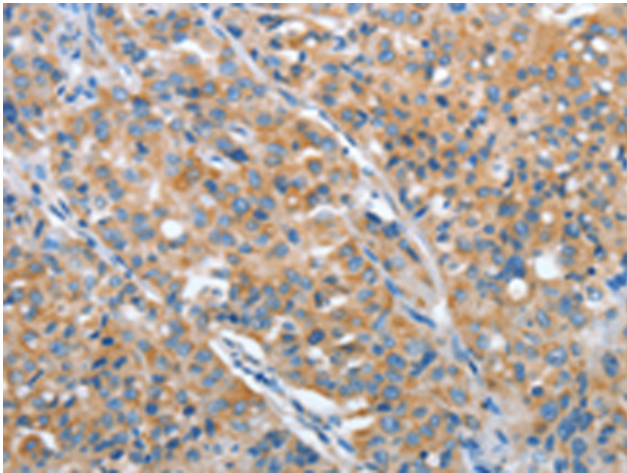
Purification: Antigen affinity purification

Species Reactivity: Human, Mouse

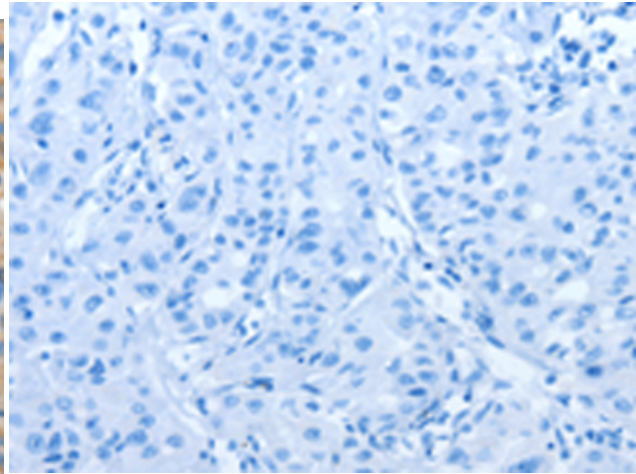
Constituents: PBS (without Mg²⁺ and Ca²⁺), pH 7.4, 150 mM NaCl, 0.05% Sodium Azide and 40% glycerol

Research Areas: Signal Transduction

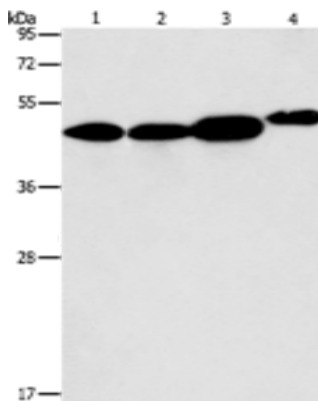
Storage & Shipping: Store at -20°C. Avoid repeated freezing and thawing



Immunohistochemistry analysis of paraffin embedded Human lung cancer tissue using 217031(ARFGAP1 Antibody) at a dilution of 1/30(Cytoplasm).



In comparison with the IHC on the left, the same paraffin-embedded Human lung cancer tissue is first treated with the fusion protein and then with 217031(Anti-ARFGAP1 Antibody) at dilution 1/30.



Gel: 10%SDS-PAGE, Lysate: 40 μ g;
Lane 1-4: 293T cells, A549 cells, PC3 cells,
NIH/3T3 cells;
Primary antibody: 217031(ARFGAP1 Antibody)
at dilution 1/600;
Secondary antibody: Goat anti rabbit IgG at
1/8000 dilution;
Exposure time: 10 seconds