

## ARF6 RABBIT PAB

**Cat.#:** S216348

**Product Name:** Anti-ARF6 Rabbit Polyclonal Antibody

**Synonyms:**

**UNIPROT ID:** P62330 (Gene Accession - BC008918 )

**Background:** This gene encodes a member of the human ARF gene family, which is part of the RAS superfamily. The ARF genes encode small guanine nucleotide-binding proteins that stimulate the ADP-ribosyltransferase activity of cholera toxin and play a role in vesicular trafficking and as activators of phospholipase D. The product of this gene is localized to the plasma membrane, and regulates vesicular trafficking, remodelling of membrane lipids, and signaling pathways that lead to actin remodeling. A pseudogene of this gene is located on chromosome 7.

**Immunogen:** Fusion protein of human ARF6

**Applications:** ELISA, WB, IHC

**Recommended Dilutions:** IHC: 25-100;WB: 200-1000;ELISA: 1000-2000

**Host Species:** Rabbit

**Clonality:** Rabbit Polyclonal

**Isotype:** Immunogen-specific rabbit IgG

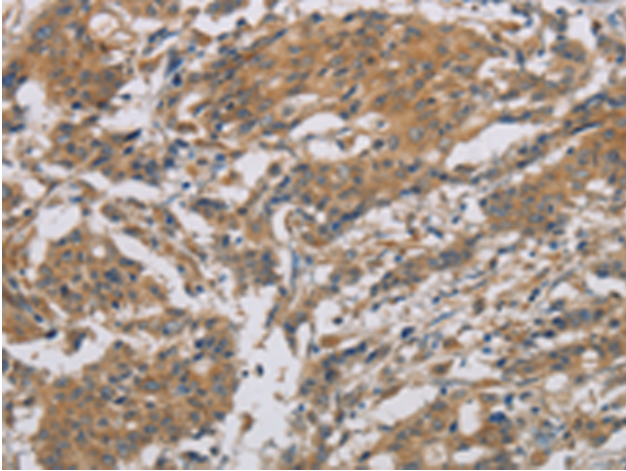
**Purification:** Antigen affinity purification

**Species Reactivity:** Human, Mouse, Rat

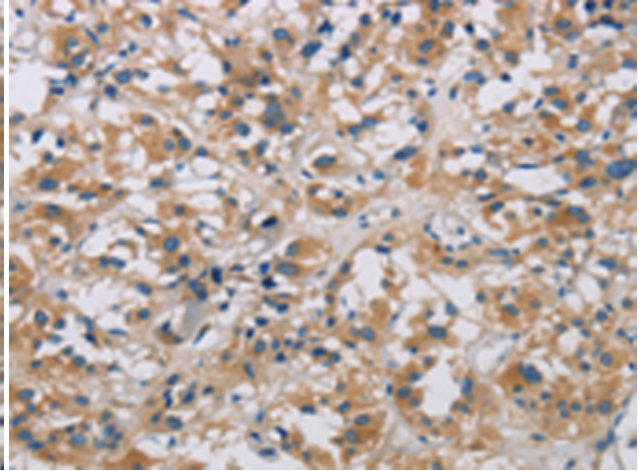
**Constituents:** PBS (without Mg<sup>2+</sup> and Ca<sup>2+</sup>), pH 7.4, 150 mM NaCl, 0.05% Sodium Azide and 40% glycerol

**Research Areas:** Signal Transduction

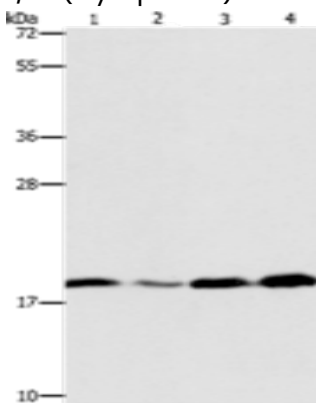
**Storage & Shipping:** Store at -20°C. Avoid repeated freezing and thawing



Immunohistochemistry analysis of paraffin-embedded Human gastric cancer tissue using 216348(ARF6 Antibody) at a dilution of 1/20(Cytoplasm).



Immunohistochemistry analysis of paraffin-embedded Human thyroid cancer tissue using 216348(Anti-ARF6 Antibody) at a dilution of 1/20.



Gel: 10%SDS-PAGE, Lysate: 40  $\mu$ g;  
Lane 1-4: A431 cells, human liver cancer tissue,  
231 cells, human fetal liver tissue;  
Primary antibody: 216348(ARF6 Antibody) at  
dilution 1/200;  
Secondary antibody: Goat anti rabbit IgG at  
1/8000 dilution;  
Exposure time: 20 seconds