

## ARC RABBIT PAB

**Cat.#:** S210806

**Product Name:** Anti-ARC Rabbit Polyclonal Antibody

**Synonyms:** hArc; Arg3.1

**UNIPROT ID:** Q7LC44 (Gene Accession - BC012321 )

**Background:** Predicted to enable mRNA binding activity. Involved in cell migration; cytoskeleton organization; and regulation of cell morphogenesis. Located in cytoplasm and plasma membrane.

**Immunogen:** Fusion protein of human ARC

**Applications:** ELISA, IHC

**Recommended Dilutions:** IHC: 50-200; ELISA: 5000-10000

**Host Species:** Rabbit

**Clonality:** Rabbit Polyclonal

**Isotype:** Immunogen-specific rabbit IgG

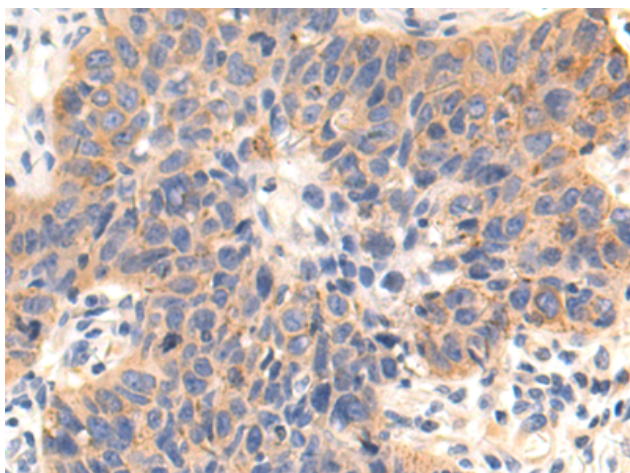
**Purification:** Antigen affinity purification

**Species Reactivity:** Human, Mouse, Rat

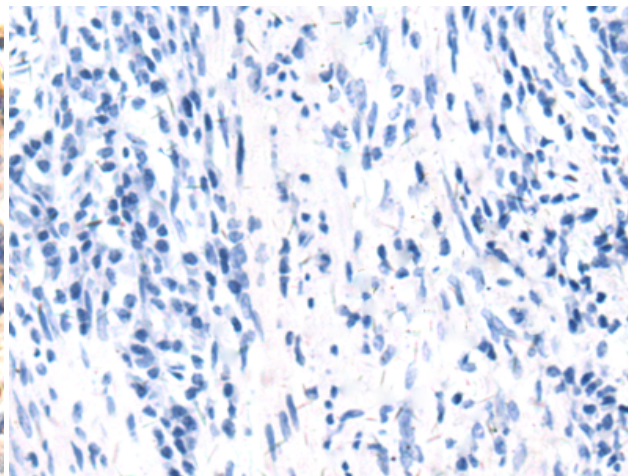
**Constituents:** PBS (without Mg<sup>2+</sup> and Ca<sup>2+</sup>), pH 7.4, 150 mM NaCl, 0.05% Sodium Azide and 40% glycerol

**Research Areas:** Neuroscience

**Storage & Shipping:** Store at -20°C. Avoid repeated freezing and thawing



Immunohistochemistry analysis of paraffin embedded Human thyroid cancer tissue using 210806(ARC Antibody) at a dilution of 1/80(Cytoplasm).



In comparison with the IHC on the left, the same paraffin-embedded Human thyroid cancer tissue is first treated with the fusion protein and then with 210806(Anti-ARC Antibody) at dilution 1/80.