

## AQUAPORIN 2 RABBIT MAB

**Cat.#:** N261864

**Product Name:** Anti-Aquaporin 2 Rabbit Monoclonal Antibody

**Synonyms:** AQP-CD; WCH-CD

**UNIPROT ID:** P41181

**Background:** The basic job of aquaporin 2 is to reabsorb water from the urine while its being removed from the blood by the kidney. Aquaporin 2 is in kidney epithelial cells and usually lies dormant in intracellular vesicle membranes, but when it is needed vasopressin binds to the cell surface vasopressin receptor, activating a signaling pathway that causes the aquaporin 2 containing vesicles to fuse with the plasma membrane so the aquaporin 2 can be used by the cell.

**Immunogen:** A synthetic peptide of human Aquaporin 2

**Applications:** WB,IHC-P,IP

**Recommended Dilutions:** WB: 1/500-1/1000 IHC: 1/50-1/100 IP: 1/20

**Host Species:** Rabbit

**Clonality:** Rabbit Monoclonal

**Clone ID:** R05-4A2

**MW:** Calculated MW: 29 kDa; Observed MW: 37 kDa

**Isotype:** IgG

**Purification:** Affinity Purified

**Species Reactivity:** Human

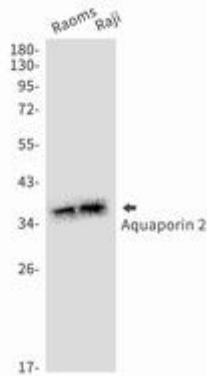
**Conjugation:** Unconjugated

**Modification:** Unmodified

**Constituents:** PBS (without Mg<sup>2+</sup> and Ca<sup>2+</sup>), pH 7.3 containing 50% glycerol, 0.5% BSA and 0.02% sodium azide

**Research Areas:** Cell Biology

**Storage & Shipping:** Store at -20°C. Avoid repeated freezing and thawing



Western blot analysis of Aquaporin 2 in Raoms, Raji lysates using Aquaporin 2 antibody.