

AQUAPORIN 1 RABBIT PAB

Cat.#: N225799

Product Name: Anti-Aquaporin 1 Rabbit pAb

Synonyms: AQP1; CHIP28; Aquaporin-1; AQP-1; Aquaporin-CHIP; Urine water channel; Water channel protein for red blood cells and kidney proximal tubule

UNIPROT ID: P29972

Background: Forms a water-specific channel that provides the plasma membranes of red cells and kidney proximal tubules with high permeability to water, thereby permitting water to move in the direction of an osmotic gradient.

Immunogen: A synthesized peptide derived from human AQP1

Applications: WB,IHC-P,ICC/IF

Recommended Dilutions: WB: 1/500-1/1000 IHC: 1/50-1/100 IF: 1/50-1/200

Host Species: Rabbit

Clonality: Rabbit Polyclonal

Clone ID: -

MW: Calculated MW: 29 kDa; Observed MW: 29 kDa

Isotype: IgG

Purification: Affinity Chromatography

Species Reactivity: Human,Mouse,Rat

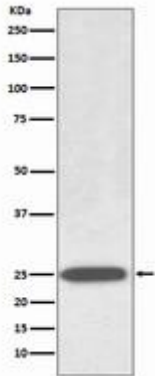
Conjugation: Unconjugated

Modification: Unmodified

Constituents: PBS (without Mg²⁺ and Ca²⁺), pH 7.3 containing 50% glycerol, 0.5% BSA and 0.02% sodium azide

Research Areas: Cell Biology

Storage & Shipping: Store at -20°C. Avoid repeated freezing and thawing



Western blot analysis of AQP1 in Human fetal kidney lysates using Aquaporin 1 antibody.