

APIP RABBIT PAB

Cat.#: S216290

Product Name: Anti-APIP Rabbit Polyclonal Antibody

Synonyms: APIP2, CGI29, CGI-29, MMRP19, dJ179L10.2

UNIPROT ID: Q96GX9 (Gene Accession - BC008440)

Background: APIP is an APAF1 (MIM 602233)-interacting protein that acts as a negative regulator of ischemic/hypoxic injury. The protein highly expressed in skeletal muscle and heart and binds to the CARD of Apaf-1 in competition with caspase-9. Exogenous APIP inhibits cytochrome c-induced activation of caspase-3 and caspase-9, and suppresses cell death triggered by mitochondrial apoptotic stimuli through inhibiting the downstream activity of cytochrome c released from mitochondria.

Immunogen: Fusion protein of human APIP

Applications: ELISA, WB, IHC

Recommended Dilutions: IHC: 25-100;WB: 200-1000;ELISA: 500-5000

Host Species: Rabbit

Clonality: Rabbit Polyclonal

Isotype: Immunogen-specific rabbit IgG

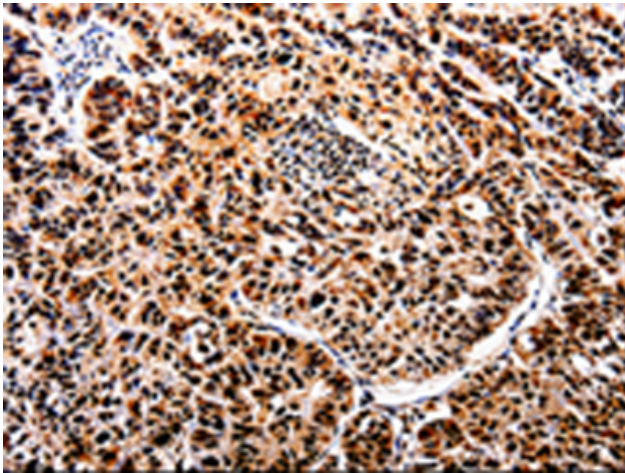
Purification: Antigen affinity purification

Species Reactivity: Human, Mouse

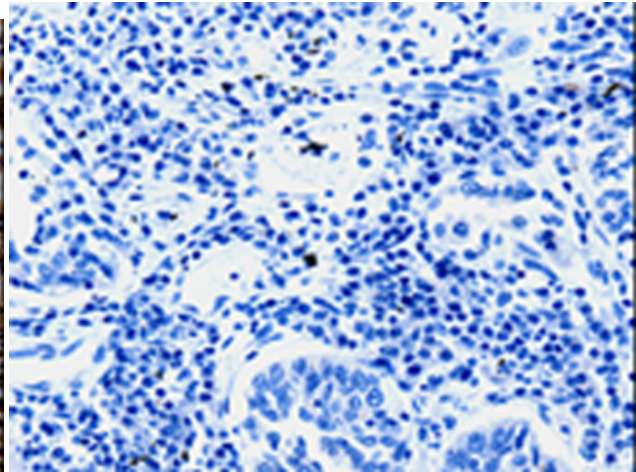
Constituents: PBS (without Mg²⁺ and Ca²⁺), pH 7.4, 150 mM NaCl, 0.05% Sodium Azide and 40% glycerol

Research Areas: Cancer

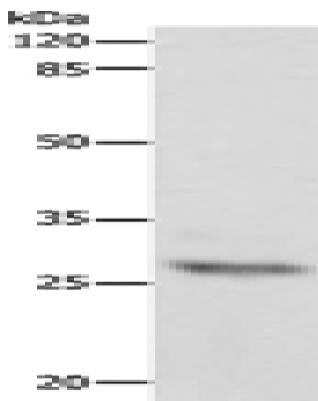
Storage & Shipping: Store at -20°C. Avoid repeated freezing and thawing



Immunohistochemistry analysis of paraffin embedded Human lung cancer tissue using 216290 (APIP Antibody) at a dilution of 1/25 (Cytoplasm, Nucleus).



In comparison with the IHC on the left, the same paraffin-embedded Human lung cancer tissue is first treated with the fusion protein and then with 216290 (Anti-APIP Antibody) at dilution 1/25.



Gel: 10% SDS-PAGE, Lysate: 60 µg;
Lane: Mouse heart tissue;
Primary antibody: 216290 (APIP Antibody) at dilution 1/300;
Secondary antibody: Goat anti rabbit IgG at 1/8000 dilution;
Exposure time: 10 seconds