

APG5L RABBIT MAB

Cat.#: N261857

Product Name: Anti-APG5L Rabbit Monoclonal Antibody

Synonyms: APG 5L; APG5; APG5 autophagy 5 like; APG5 like; APG5-like; Apoptosis specific protein; ASP; ATG 5; ATG5 autophagy related 5 homolog; Autophagy protein 5; hAPG5

UNIPROT ID: Q9HIY0

Background: Required for autophagy. Conjugates to ATG12 and associates with isolation membrane to form cup-shaped isolation membrane and autophagosome. Involved in mitochondrial quality control after oxidative damage, and in subsequent cellular longevity.

Immunogen: A synthetic peptide of human APG5L/ATG5

Applications: WB, ICC/IF, IP

Recommended Dilutions: WB: 1/500-1/1000 IF: 1/50-1/200 IP: 1/20

Host Species: Rabbit

Clonality: Rabbit Monoclonal

Clone ID: R05-4F2

MW: Calculated MW: 32 kDa; Observed MW: 55 kDa

Isotype: IgG

Purification: Affinity Purified

Species Reactivity: Human, Mouse, Rat

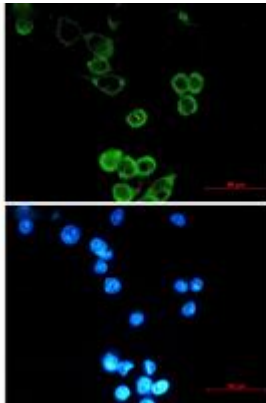
Conjugation: Unconjugated

Modification: Unmodified

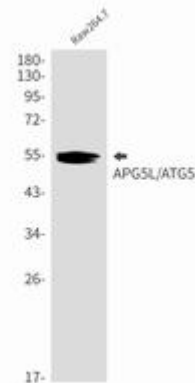
Constituents: PBS (without Mg²⁺ and Ca²⁺), pH 7.3 containing 50% glycerol, 0.5% BSA and 0.02% sodium azide

Research Areas: Cell Biology

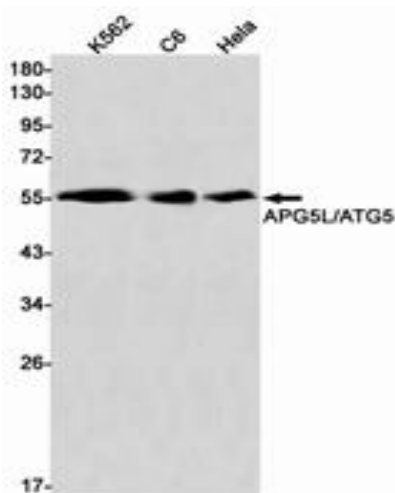
Storage & Shipping: Store at -20°C. Avoid repeated freezing and thawing



Immunocytochemistry analysis of APG5L/ATG5 (green) in MCF-7 using APG5L/ATG5 antibody, and DAPI (blue)



Western blot analysis of APG5L/ATG5 in Raw264.7 lysates using APG5L antibody.



Western blot analysis of APG5L/ATG5 Rabbit pA in K562, C6, HeLa lysates using APG5L/ATG5 antibody.