

## APELIN RABBIT PAB

**Cat.#:** N225029

**Product Name:** Anti-Apelin Rabbit pAb

**Synonyms:** APLN; APEL; Apelin; APJ endogenous ligand

**UNIPROT ID:** Q9ULZ1

**Background:** Endogenous ligand for the apelin receptor (APLNR).

**Immunogen:** The antiserum was produced against synthesized peptide derived from the C-terminal region of human APLN. AA range:28-77

**Applications:** ELISA,IHC-P

**Recommended Dilutions:** IHC: 1/50-1/100 ELISA: 1/10000

**Host Species:** Rabbit

**Clonality:** Rabbit Polyclonal

**Clone ID:** -

**MW:** -

**Isotype:** IgG

**Purification:** Affinity Purified

**Species Reactivity:** Human,Mouse,Rat

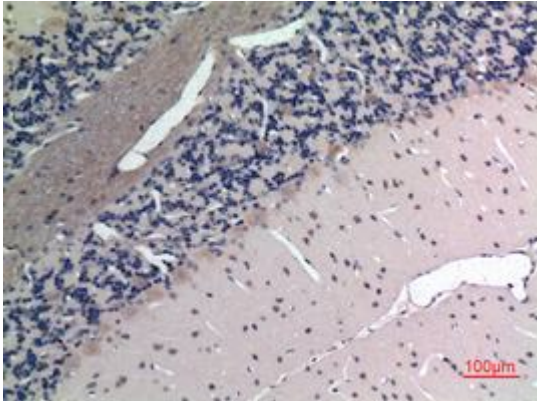
**Conjugation:** Unconjugated

**Modification:** Unmodified

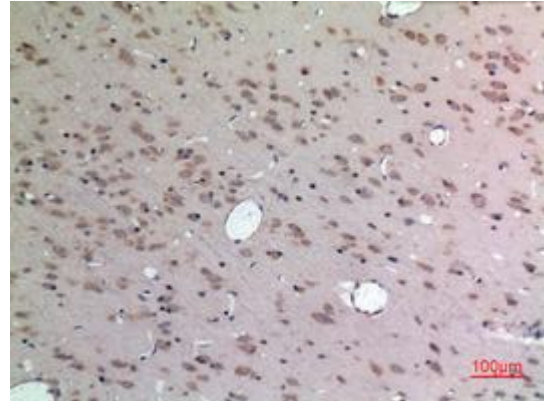
**Constituents:** PBS (without Mg<sup>2+</sup> and Ca<sup>2+</sup>), pH 7.3 containing 50% glycerol, 0.5% BSA and 0.02% sodium azide

**Research Areas:** Neuroscience

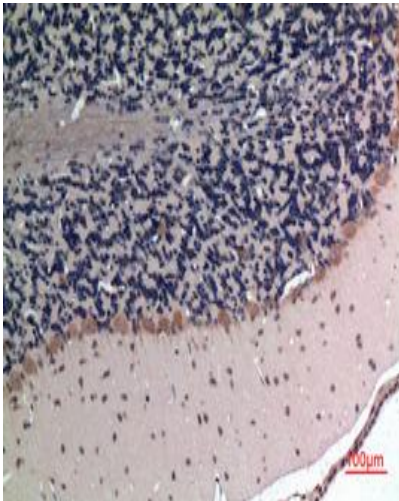
**Storage & Shipping:** Store at -20°C. Avoid repeated freezing and thawing



Immunohistochemical analysis of paraffin-embedded Human tonsils using Apelin antibody. High-pressure and temperature Sodium Citrate pH 6.0 was used for antigen retrieval.



Immunohistochemistry analysis of paraffin-embedded rat brain using Apelin antibody. High-pressure and temperature Sodium Citrate pH 6.0 was used for antigen retrieval.



Immunohistochemistry analysis of paraffin-embedded rat brain using Apelin antibody. High-pressure and temperature Sodium Citrate pH 6.0 was used for antigen retrieval.