

## APE1 RABBIT MAB

**Cat.#:** N261855

**Product Name:** Anti-APE1 Rabbit Monoclonal Antibody

**Synonyms:** APEX1; APE; APE1; APEX; APX; HAPI; REF1; DNA-(apurinic or apyrimidinic site) lyase; APEX nuclease; APEN; Apurinic-apyrimidinic endonuclease 1; AP endonuclease 1; APE-1; REF-1; Redox factor-1

**UNIPROT ID:** P27695

**Background:** Ape1 initiates the repair of abasic sites and is essential for the base excision repair (BER) pathway. Repair activities of Ape1 are stimulated by interaction with XRCC1, another essential protein in BER. Ape1 functions as a redox factor that maintains transcription factors in an active, reduced state but can also function in a redox-independent manner as a transcriptional cofactor to control different cellular fates such as apoptosis, proliferation and differentiation.

**Immunogen:** Recombinant protein of human APE1

**Applications:** WB,IHC-F,IHC-P,ICC/IF

**Recommended Dilutions:** WB: 1/500-1/1000 IHC: 1/50-1/100 IF: 1/50-1/200

**Host Species:** Rabbit

**Clonality:** Rabbit Monoclonal

**Clone ID:** R01-6G2

**MW:** Calculated MW: 36 kDa; Observed MW: 36 kDa

**Isotype:** IgG

**Purification:** Affinity Purified

**Species Reactivity:** Human,Mouse,Rat

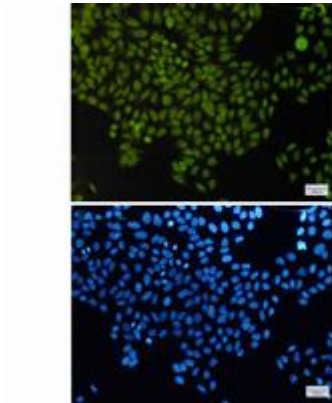
**Conjugation:** Unconjugated

**Modification:** Unmodified

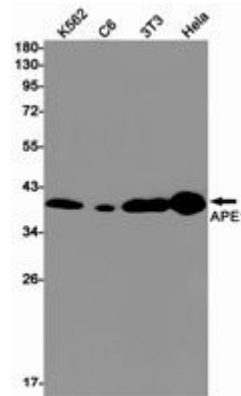
**Constituents:** PBS (without Mg<sup>2+</sup> and Ca<sup>2+</sup>), pH 7.3 containing 50% glycerol, 0.5% BSA and 0.02% sodium azide

**Research Areas:** Epigenetics and Nuclear Signaling

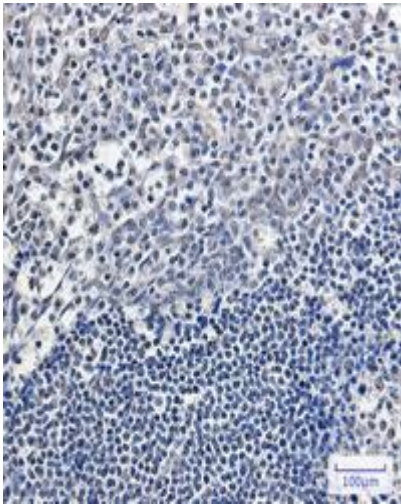
**Storage & Shipping:** Store at -20°C. Avoid repeated freezing and thawing



Immunocytochemistry analysis of APE1 (green) in HeLa using APE1 antibody, and DAPI (blue)



Western blot analysis of APE1 in K562, C6, 3T3, HeLa lysates using APE1 antibody.



Immunohistochemistry analysis of paraffin-embedded Human tonsil using APE1 antibody. High-pressure and temperature Sodium Citrate pH 6.0 was used for antigen retrieval.