

## APC RABBIT PAB

**Cat.#:** S220297

**Product Name:** Anti-APC Rabbit Polyclonal Antibody

**Synonyms:** GS; DP2; DP3; BTPS2; DP2.5; PPP1R46

**UNIPROT ID:** P25054 (Gene Accession - NP\_000029 )

**Background:** This gene encodes a tumor suppressor protein that acts as an antagonist of the Wnt signaling pathway. It is also involved in other processes including cell migration and adhesion, transcriptional activation, and apoptosis. Defects in this gene cause familial adenomatous polyposis (FAP), an autosomal dominant pre-malignant disease that usually progresses to malignancy. Disease-associated mutations tend to be clustered in a small region designated the mutation cluster region (MCR) and result in a truncated protein product.

**Immunogen:** Synthetic peptide of human APC

**Applications:** ELISA, IHC

**Recommended Dilutions:** IHC: 25-100; ELISA: 1000-2000

**Host Species:** Rabbit

**Clonality:** Rabbit Polyclonal

**Isotype:** Immunogen-specific rabbit IgG

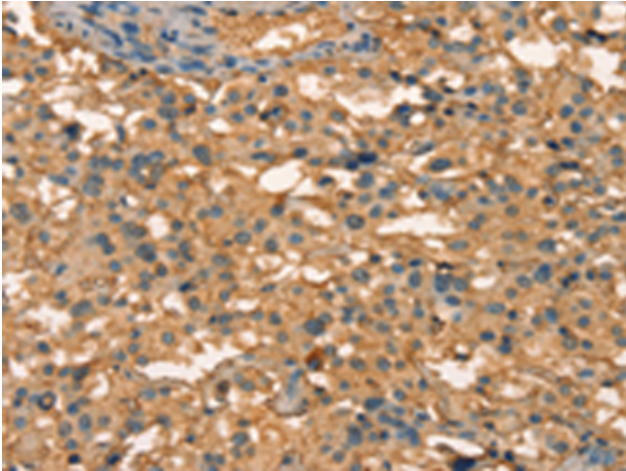
**Purification:** Antigen affinity purification

**Species Reactivity:** Human, Mouse, Rat

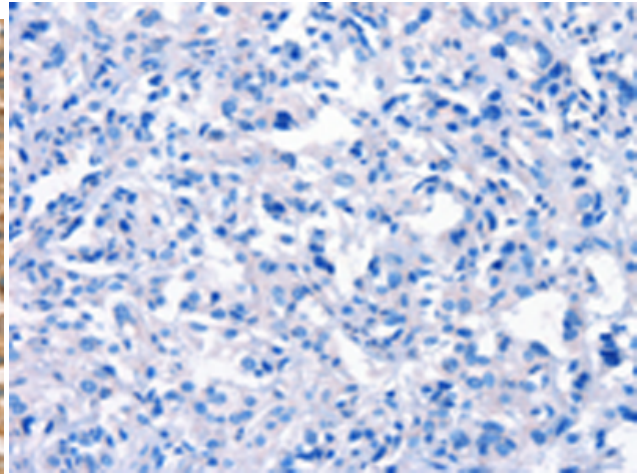
**Constituents:** PBS (without Mg<sup>2+</sup> and Ca<sup>2+</sup>), pH 7.4, 150 mM NaCl, 0.05% Sodium Azide and 40% glycerol

**Research Areas:** Epigenetics and Nuclear Signaling, Cancer, Neuroscience, Cardiovascular, Signal Transduction

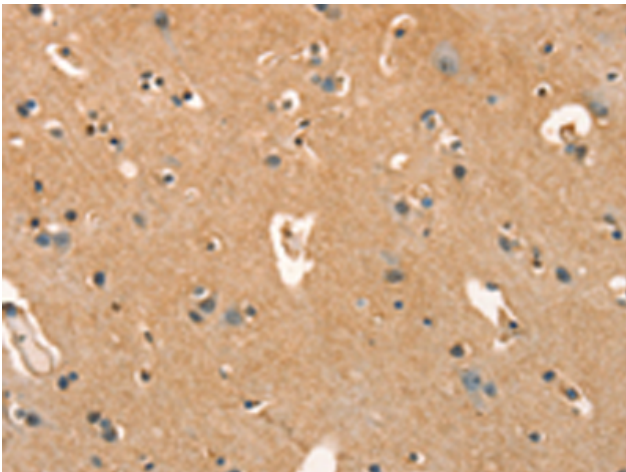
**Storage & Shipping:** Store at -20°C. Avoid repeated freezing and thawing



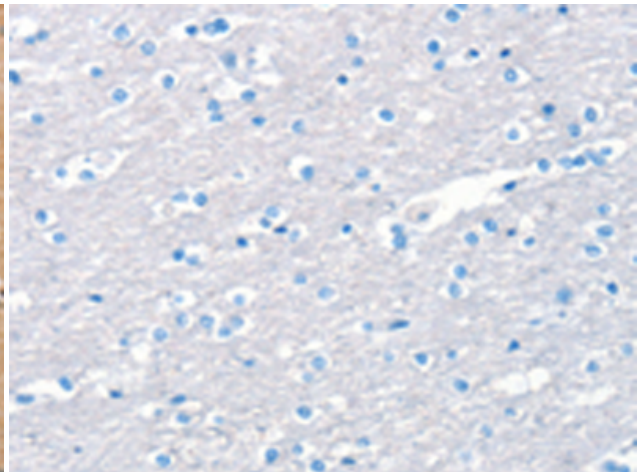
Immunohistochemistry analysis of paraffin embedded Human thyroid cancer tissue using 220297 (APC Antibody) at a dilution of 1/25 (Cytoplasm).



In comparison with the IHC on the left, the same paraffin-embedded Human thyroid cancer tissue is first treated with the synthetic peptide and then with 220297 (Anti-APC Antibody) at dilution 1/25.



The image on the left is immunohistochemistry of paraffin-embedded Human brain tissue using 220297 (Anti-APC Antibody) at a dilution of 1/25.



In comparison with the IHC on the left, the same paraffin-embedded Human brain tissue is first treated with synthetic peptide and then with D261290 (Anti-APC Antibody) at dilution 1/25.