

ANXA6 RABBIT PAB

Cat.#: S216332

Product Name: Anti-ANXA6 Rabbit Polyclonal Antibody

Synonyms: ANX6, CBP68

UNIPROT ID: P08133 (Gene Accession - BC017046)

Background: Annexin VI belongs to a family of calcium-dependent membrane and phospholipid binding proteins. Several members of the annexin family have been implicated in membrane-related events along exocytotic and endocytotic pathways. The annexin VI gene is approximately 60 kbp long and contains 26 exons. It encodes a protein of about 68 kDa that consists of eight 68-amino acid repeats separated by linking sequences of variable lengths. It is highly similar to human annexins I and II sequences, each of which contain four such repeats. Annexin VI has been implicated in mediating the endosome aggregation and vesicle fusion in secreting epithelia during exocytosis. Alternatively spliced transcript variants have been described.

Immunogen: Fusion protein of human ANXA6

Applications: ELISA, WB, IHC

Recommended Dilutions: IHC: 25-100;WB: 200-500;ELISA: 1000-2000

Host Species: Rabbit

Clonality: Rabbit Polyclonal

Isotype: Immunogen-specific rabbit IgG

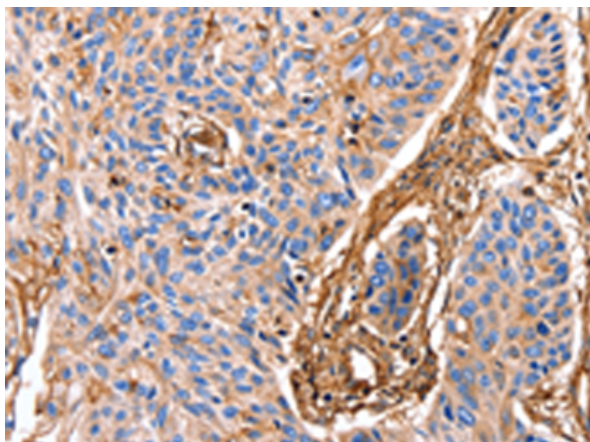
Purification: Antigen affinity purification

Species Reactivity: Human, Mouse, Rat

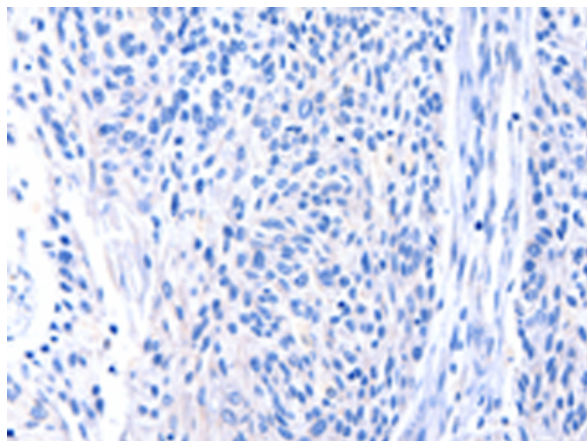
Constituents: PBS (without Mg²⁺ and Ca²⁺), pH 7.4, 150 mM NaCl, 0.05% Sodium Azide and 40% glycerol

Research Areas: Signal Transduction

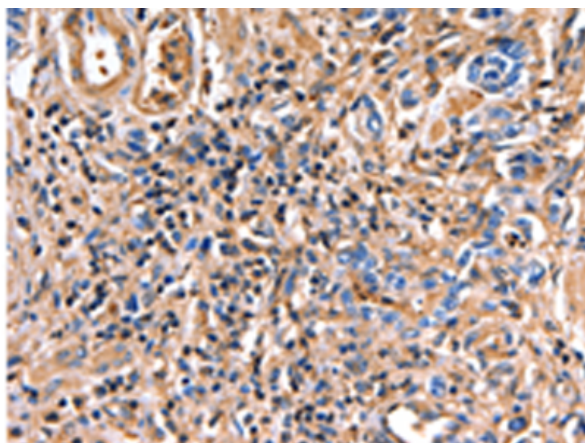
Storage & Shipping: Store at -20°C. Avoid repeated freezing and thawing



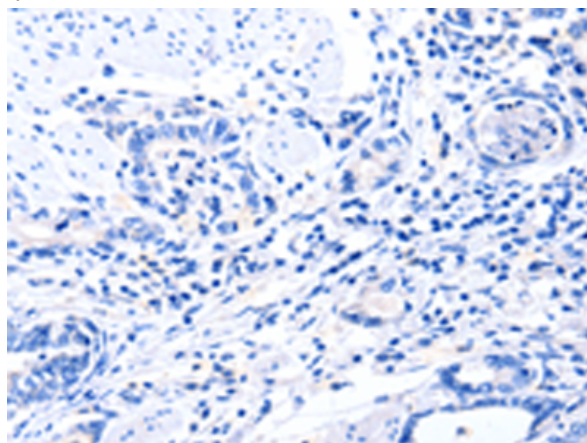
Immunohistochemistry analysis of paraffin embedded Human esophagus cancer tissue using 216332(ANXA6 Antibody) at a dilution of 1/17(Cytoplasm, Cell membrane).



In comparison with the IHC on the left, the same paraffin-embedded Human esophagus cancer tissue is first treated with the fusion protein and then with 216332(Anti-ANXA6 Antibody) at dilution 1/17.



The image on the left is immunohistochemistry of paraffin-embedded Human gastric cancer tissue using 216332(Anti-ANXA6 Antibody) at a dilution of 1/17.



In comparison with the IHC on the left, the same paraffin-embedded Human gastric cancer tissue is first treated with fusion protein and then with D220221(Anti-ANXA6 Antibody) at dilution 1/17.



Gel: 10%SDS-PAGE, Lysate: 30 µg;
Lane: Mouse kidney tissue;
Primary antibody: 216332(ANXA6 Antibody) at dilution 1/350;
Secondary antibody: Goat anti rabbit IgG at 1/8000 dilution;
Exposure time: 10 seconds



Product Description

Pioneering GTPase and Oncogene Product Development since 2010
