

ANXA2 RABBIT PAB

Cat.#: S216246

Product Name: Anti-ANXA2 Rabbit Polyclonal Antibody

Synonyms: P36; ANX2; LIP2; LPC2; CALIH; LPC2D; ANX2L4; PAP-IV; HEL-S-270

UNIPROT ID: P07355 (Gene Accession - BC009564)

Background: This gene encodes a member of the annexin family. Members of this calcium-dependent phospholipid-binding protein family play a role in the regulation of cellular growth and in signal transduction pathways. This protein functions as an autocrine factor which heightens osteoclast formation and bone resorption. This gene has three pseudogenes located on chromosomes 4, 9 and 10, respectively. Multiple alternatively spliced transcript variants encoding different isoforms have been found for this gene.

Immunogen: Fusion protein of human ANXA2

Applications: ELISA, WB, IHC

Recommended Dilutions: IHC: 30-150;WB: 1000-5000;ELISA: 5000-10000

Host Species: Rabbit

Clonality: Rabbit Polyclonal

Isotype: Immunogen-specific rabbit IgG

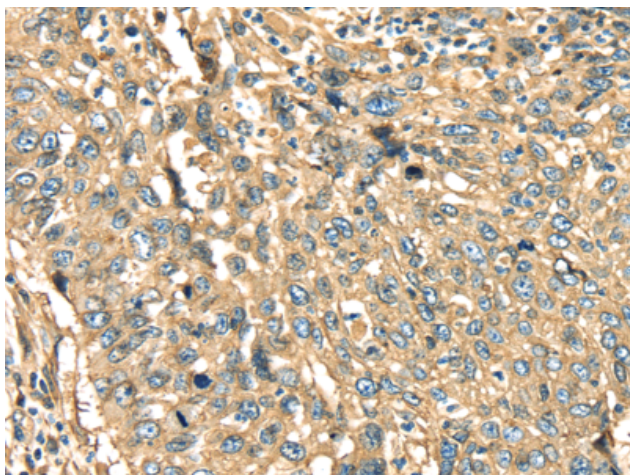
Purification: Antigen affinity purification

Species Reactivity: Human, Mouse, Rat

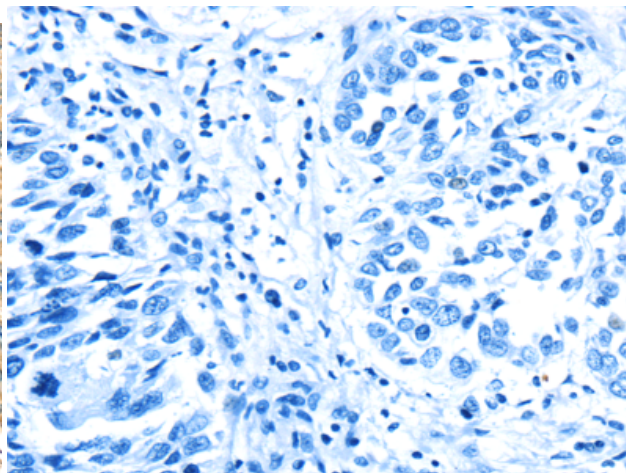
Constituents: PBS (without Mg²⁺ and Ca²⁺), pH 7.4, 150 mM NaCl, 0.05% Sodium Azide and 40% glycerol

Research Areas: Signal Transduction

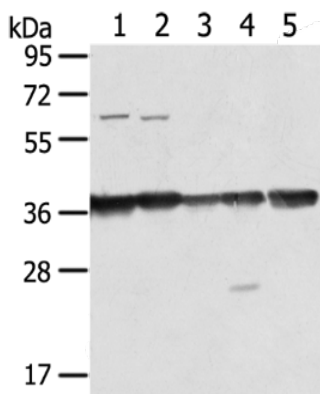
Storage & Shipping: Store at -20°C. Avoid repeated freezing and thawing



Immunohistochemistry analysis of paraffin embedded Human lung cancer tissue using 216246(ANXA2 Antibody) at a dilution of 1/40(Cytoplasm).



In comparison with the IHC on the left, the same paraffin-embedded Human lung cancer tissue is first treated with the fusion protein and then with 216246(Anti-ANXA2 Antibody) at dilution 1/40.



Gel: 8%SDS-PAGE, Lysate: 40 µg;

Lane 1-5: HepG2, NIH/3T3, K562, Hela and MCF7 cell;

Primary antibody: 216246(ANXA2 Antibody) at dilution 1/600;

Secondary antibody: Goat anti rabbit IgG at 1/8000 dilution;

Exposure time: 1 second