

ANTERIOR GRADIENT 2 RABBIT MAB

Cat.#: N261650

Product Name: Anti-Anterior Gradient 2 Rabbit Monoclonal Antibody

Synonyms: Anterior gradient protein 2 homolog; AG-2; hAG-2; HPC8; Secreted cement gland protein XAG-2 homolog; AGR2; AG2; GOB4; XAG2

UNIPROT ID: O95994

Background: AGR2 is a member of the protein disulfide isomerase (PDI) family of proteins and a homolog of the *Xenopus laevis* cement gland protein. Required for MUC2 post-transcriptional synthesis and secretion. May play a role in the production of mucus by intestinal cells (By similarity). Proto-oncogene that may play a role in cell migration, cell differentiation and cell growth.

Immunogen: A synthetic peptide of human Anterior Gradient 2

Applications: WB,IHC-F,IHC-P,ICC/IF,IP

Recommended Dilutions: WB: 1/500-1/1000 IHC: 1/50-1/100 IF: 1/50-1/200 IP: 1/20

Host Species: Rabbit

Clonality: Rabbit Monoclonal

Clone ID: R04-1H6

MW: Calculated MW: 20 kDa; Observed MW: 20 kDa

Isotype: IgG

Purification: Affinity Purified

Species Reactivity: Human,Rat

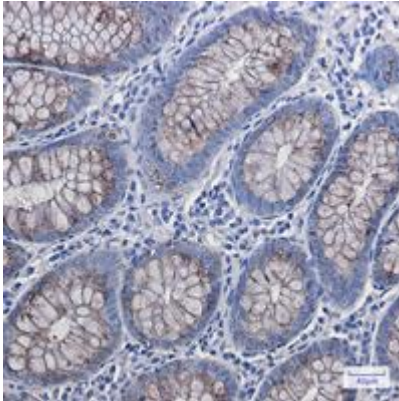
Conjugation: Unconjugated

Modification: Unmodified

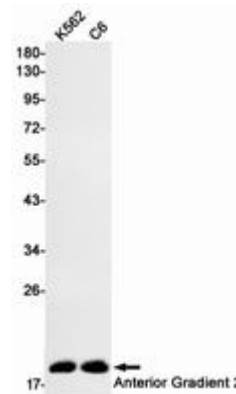
Constituents: PBS (without Mg²⁺ and Ca²⁺), pH 7.3 containing 50% glycerol, 0.5% BSA and 0.02% sodium azide

Research Areas: Cancer

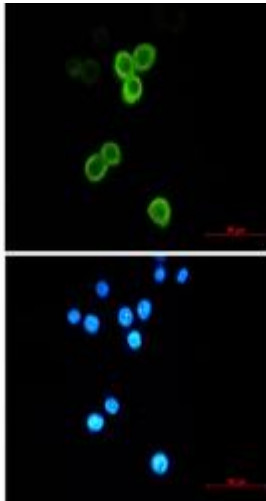
Storage & Shipping: Store at -20°C. Avoid repeated freezing and thawing



Immunohistochemistry analysis of paraffin-embedded colon using Anterior Gradient 2 antibody. High-pressure and temperature Sodium Citrate pH 6.0 was used for antigen retrieval.



Western blot analysis of Anterior Gradient 2 in K562, C6 lysates using Anterior Gradient 2 antibody.



Immunocytochemistry analysis of Anterior Gradient 2 (green) in MCF-7 using Anterior Gradient 2 antibody, and DAPI (blue)