

## ANP32E RABBIT PAB

**Cat.#:** S220666

**Product Name:** Anti-ANP32E Rabbit Polyclonal Antibody

**Synonyms:** LANPL; LANP-L

**UNIPROT ID:** Q9BTT0 (Gene Accession - NP\_112182)

**Background:** The Anp32 family consists of 32 evolutionarily-conserved proteins and is included within the superfamily of leucine-rich repeat (LRR) proteins. Leucine-rich acidic nuclear protein-like (LANPL), also called ANP32E or Cpd1, is a member of the Anp32 family. LANPL is located in the cytoplasm of peripheral blood leukocytes, colon, small intestine, prostate, thymus, spleen, skeletal muscle, liver and kidney. It has also been detected in the nucleus, cytoplasm and membrane of multiple brain regions. Upon phosphorylation, LANPL colocalizes and inhibits protein phosphatase 2A (PP2A), but does not inhibit PPI. LANPL modulates cell signalling and transduction of gene expression to regulate the morphology and dynamics of the cytoskeleton, cell adhesion, neural development and cerebellar morphogenesis.

**Immunogen:** Synthetic peptide of human ANP32E

**Applications:** ELISA, WB, IHC

**Recommended Dilutions:** IHC: 50-200;WB: 500-2000;ELISA: 2000-5000

**Host Species:** Rabbit

**Clonality:** Rabbit Polyclonal

**Isotype:** Immunogen-specific rabbit IgG

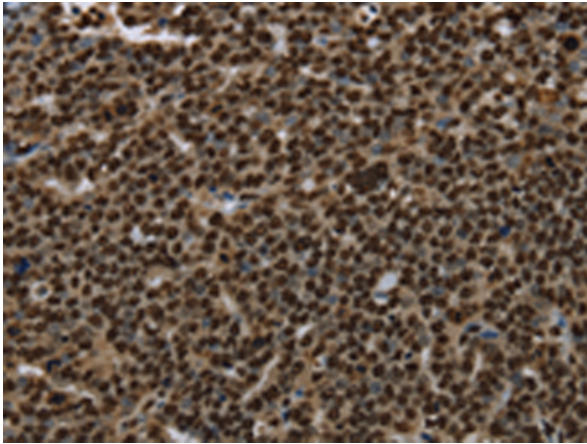
**Purification:** Antigen affinity purification

**Species Reactivity:** Human, Mouse, Rat

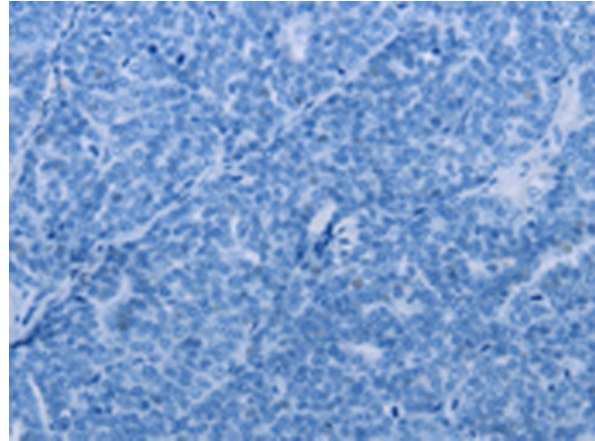
**Constituents:** PBS (without Mg<sup>2+</sup> and Ca<sup>2+</sup>), pH 7.4, 150 mM NaCl, 0.05% Sodium Azide and 40% glycerol

**Research Areas:** Cancer, Metabolism, Neuroscience

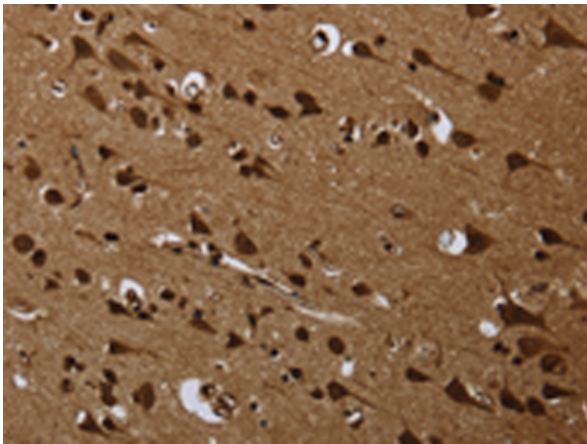
**Storage & Shipping:** Store at -20°C. Avoid repeated freezing and thawing



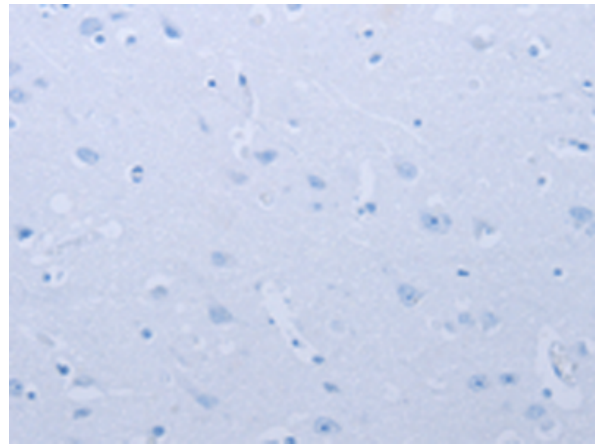
Immunohistochemistry analysis of paraffin embedded Human ovarian cancer tissue using 220666(ANP32E Antibody) at a dilution of 1/25(Cytoplasm and Nucleus).



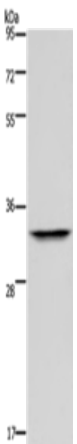
In comparison with the IHC on the left, the same paraffin-embedded Human ovarian cancer tissue is first treated with the synthetic peptide and then with 220666(Anti-ANP32E Antibody) at dilution 1/25.



The image on the left is immunohistochemistry of paraffin-embedded Human brain tissue using 220666(Anti-ANP32E Antibody) at a dilution of 1/25.



In comparison with the IHC on the left, the same paraffin-embedded Human brain tissue is first treated with synthetic peptide and then with D261845(Anti-ANP32E Antibody) at dilution 1/25.



Gel: 10%SDS-PAGE, Lysate: 40 µg;  
Lane: Mouse thymus tissue;  
Primary antibody: 220666(ANP32E Antibody) at dilution 1/300;  
Secondary antibody: Goat anti rabbit IgG at 1/8000 dilution;  
Exposure time: 20 seconds



# Product Description

Pioneering GTPase and Oncogene Product Development since 2010

---