

ANNEXIN VI RABBIT MAB

Cat.#: N261593

Product Name: Anti-Annexin VI Rabbit Monoclonal Antibody

Synonyms: p68; p70; ANX6; CBP68; CPB-II

UNIPROT ID: P08133

Background: May associate with CD21. May regulate the release of Ca²⁺ from intracellular stores. Miscellaneous Seems to bind one calcium ion with high affinity.

Immunogen: A synthetic peptide of human Annexin VI

Applications: WB, IHC-F, IHC-P, ICC/IF, IP

Recommended Dilutions: WB: 1/500-1/1000 IHC: 1/50-1/100 IF: 1/50-1/200 IP: 1/20

Host Species: Rabbit

Clonality: Rabbit Monoclonal

Clone ID: R03-6H4

MW: Calculated MW: 76 kDa; Observed MW: 70 kDa

Isotype: IgG

Purification: Affinity Purified

Species Reactivity: Human, Rat

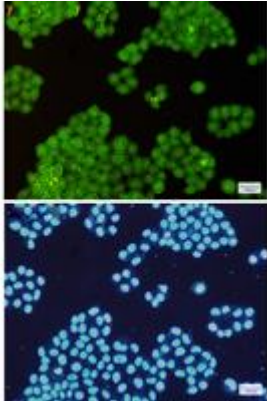
Conjugation: Unconjugated

Modification: Unmodified

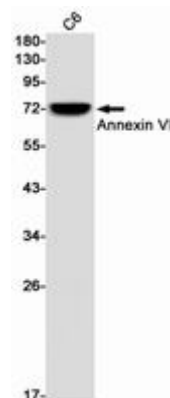
Constituents: PBS (without Mg²⁺ and Ca²⁺), pH 7.3 containing 50% glycerol, 0.5% BSA and 0.02% sodium azide

Research Areas: Cell Biology

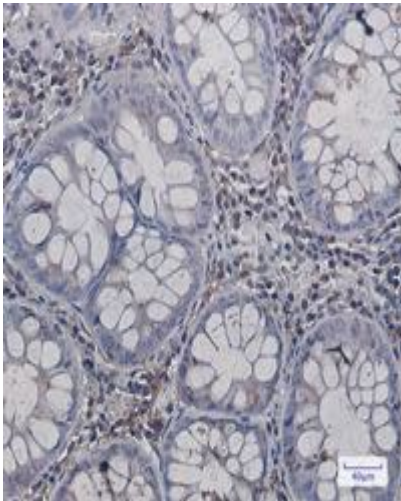
Storage & Shipping: Store at -20°C. Avoid repeated freezing and thawing



Immunocytochemistry analysis of Annexin VI (green) in HeLa using Annexin VI antibody, and DAPI (blue)



Western blot analysis of Annexin VI in C6 lysates using Annexin VI antibody.



Immunohistochemistry analysis of paraffin-embedded Human colon cancer using Annexin VI antibody. High-pressure and temperature Sodium Citrate pH 6.0 was used for antigen retrieval.