

## ANNEXIN VI RABBIT MAB

**Cat.#:** N261846

**Product Name:** Anti-Annexin VI Rabbit Monoclonal Antibody

**Synonyms:** p68; p70; ANX6; CBP68; CPB-II

**UNIPROT ID:** P08133

**Background:** May associate with CD21. May regulate the release of Ca<sup>2+</sup> from intracellular stores. Miscellaneous Seems to bind one calcium ion with high affinity.

**Immunogen:** Recombinant protein of human Annexin VI

**Applications:** WB, ICC/IF

**Recommended Dilutions:** WB: 1/500-1/1000 IF: 1/50-1/200

**Host Species:** Rabbit

**Clonality:** Rabbit Monoclonal

**Clone ID:** R03-1B7

**MW:** Calculated MW: 76 kDa; Observed MW: 70 kDa

**Isotype:** IgG

**Purification:** Affinity Purified

**Species Reactivity:** Human, Mouse, Rat

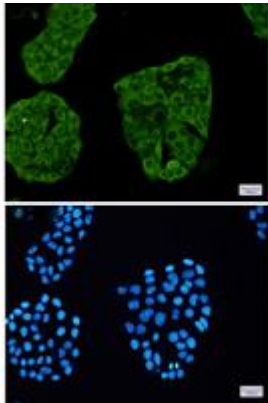
**Conjugation:** Unconjugated

**Modification:** Unmodified

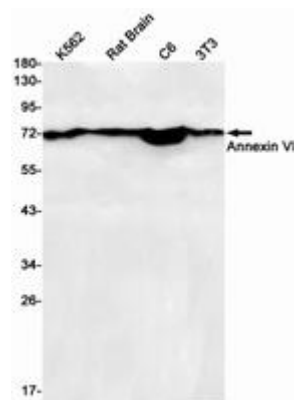
**Constituents:** PBS (without Mg<sup>2+</sup> and Ca<sup>2+</sup>), pH 7.3 containing 50% glycerol, 0.5% BSA and 0.02% sodium azide

**Research Areas:** Cell Biology

**Storage & Shipping:** Store at -20°C. Avoid repeated freezing and thawing



Immunocytochemistry analysis of Annexin VI (green) in Hela using Annexin VI antibody, and DAPI (blue)



Western blot analysis of Annexin VI in K562, rat Brain, C6, 3T3 lysates using Annexin VI antibody.