

## ANKS6 RABBIT PAB

**Cat.#:** S212979

**Product Name:** Anti-ANKS6 Rabbit Polyclonal Antibody

**Synonyms:** PKDRI; SAMD6; NPHPI6; ANKRD14

**UNIPROT ID:** Q68DC2 (Gene Accession - BC012981 )

**Background:** This gene encodes a protein containing multiple ankyrin repeats and a SAM domain. It is thought that this protein may localize to the proximal region of the primary cilium, and may play a role in renal and cardiovascular development. Mutations in this gene have been shown to cause a form of nephronophthisis (NPHPI6), a chronic tubulo-interstitial nephritis.

**Immunogen:** Fusion protein of human ANKS6

**Applications:** ELISA, IHC

**Recommended Dilutions:** IHC: 50-100; ELISA: 5000-10000

**Host Species:** Rabbit

**Clonality:** Rabbit Polyclonal

**Isotype:** Immunogen-specific rabbit IgG

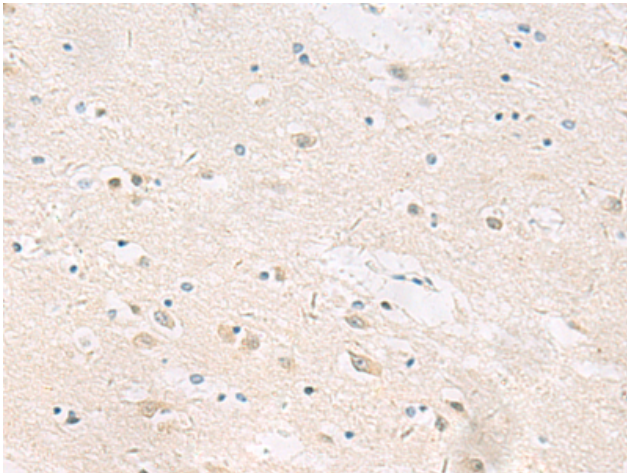
**Purification:** Antigen affinity purification

**Species Reactivity:** Human, Mouse, Rat

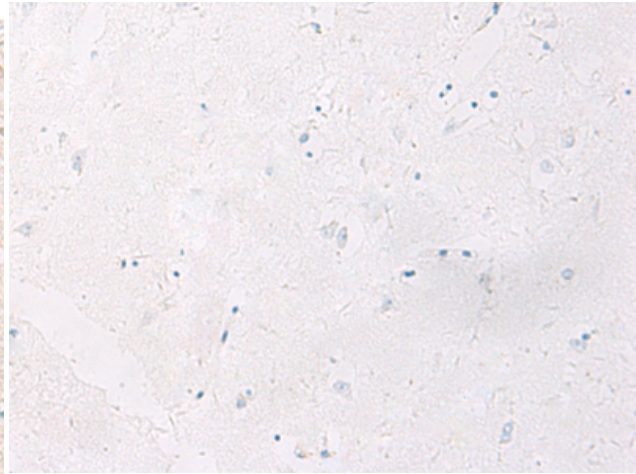
**Constituents:** PBS (without Mg<sup>2+</sup> and Ca<sup>2+</sup>), pH 7.4, 150 mM NaCl, 0.05% Sodium Azide and 40% glycerol

**Research Areas:** Cell Biology

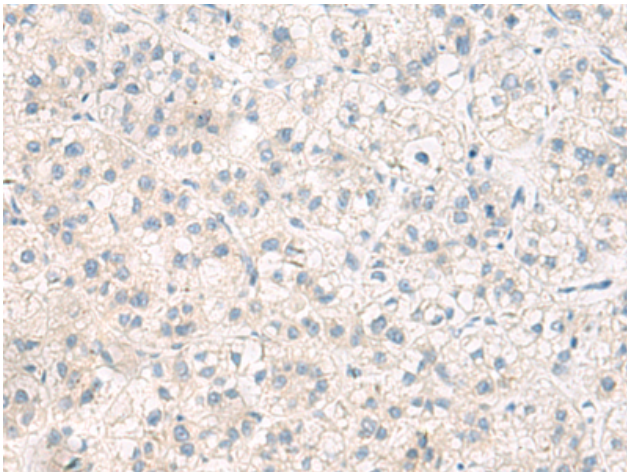
**Storage & Shipping:** Store at -20°C. Avoid repeated freezing and thawing



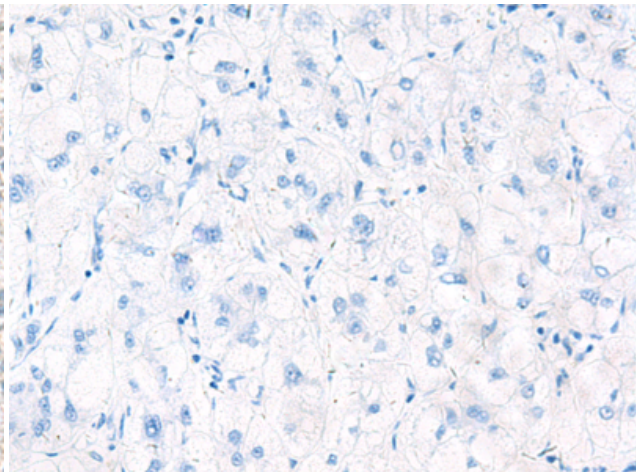
Immunohistochemistry analysis of paraffin embedded Human brain tissue using 212979(ANKS6 Antibody) at a dilution of 1/55(Cytoplasm).



In comparison with the IHC on the left, the same paraffin-embedded Human brain tissue is first treated with the fusion protein and then with 212979(Anti-ANKS6 Antibody) at dilution 1/55.



The image on the left is immunohistochemistry of paraffin-embedded Human liver cancer tissue using 212979(Anti-ANKS6 Antibody) at a dilution of 1/55.



In comparison with the IHC on the left, the same paraffin-embedded Human liver cancer tissue is first treated with fusion protein and then with D126195(Anti-ANKS6 Antibody) at dilution 1/55.