

ANKRD1 RABBIT PAB

Cat.#: S210785

Product Name: Anti-ANKRD1 Rabbit Polyclonal Antibody

Synonyms: ALRP; CARP; C-193; CVARP; MCARP; bA320F15.2

UNIPROT ID: Q15327 (Gene Accession - BC018667)

Background: The protein encoded by this gene is localized to the nucleus of endothelial cells and is induced by IL-1 and TNF-alpha stimulation. Studies in rat cardiomyocytes suggest that this gene functions as a transcription factor. Interactions between this protein and the sarcomeric proteins myopalladin and titin suggest that it may also be involved in the myofibrillar stretch-sensor system.

Immunogen: Fusion protein of human ANKRD1

Applications: ELISA, WB, IHC

Recommended Dilutions: IHC: 25-100;WB: 500-2000;ELISA: 5000-10000

Host Species: Rabbit

Clonality: Rabbit Polyclonal

Isotype: Immunogen-specific rabbit IgG

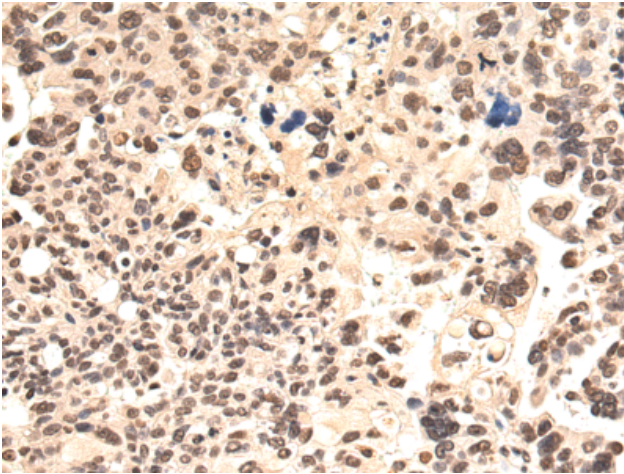
Purification: Antigen affinity purification

Species Reactivity: Human, Mouse, Rat

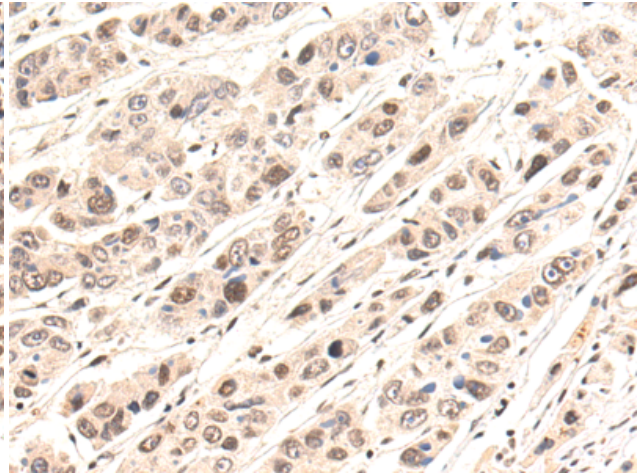
Constituents: PBS (without Mg²⁺ and Ca²⁺), pH 7.4, 150 mM NaCl, 0.05% Sodium Azide and 40% glycerol

Research Areas: Epigenetics and Nuclear Signaling, Cardiovascular

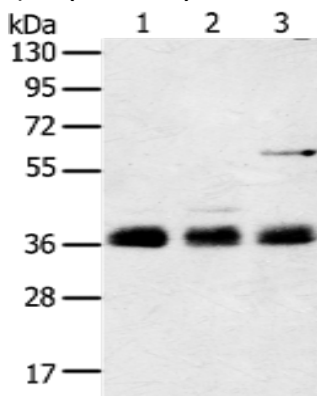
Storage & Shipping: Store at -20°C. Avoid repeated freezing and thawing



Immunohistochemistry analysis of paraffin-embedded Human breast cancer tissue using 210785(ANKRD1 Antibody) at a dilution of 1/20(Nucleus).



Immunohistochemistry analysis of paraffin-embedded Human liver cancer tissue using 210785(Anti-ANKRD1 Antibody) at a dilution of 1/20.



Gel: 8%SDS-PAGE, Lysate: 60 μ g;
Lane 1-3: Mouse lung tissue, NIH/3T3, HepG2 cell lysates;
Primary antibody: 210785(ANKRD1 Antibody) at dilution 1/400;
Secondary antibody: Goat anti rabbit IgG at 1/8000 dilution;
Exposure time: 3 seconds