

## ANGPTL6 RABBIT PAB

**Cat.#:** S221478

**Product Name:** Anti-ANGPTL6 Rabbit Polyclonal Antibody

**Synonyms:** AGF; ARP5

**UNIPROT ID:** Q8NI99 (Gene Accession - NP\_114123 )

**Background:** May play a role in the wound healing process. May promote epidermal proliferation, remodeling and regeneration. May promote the chemotactic activity of endothelial cells and induce neovascularization. May counteract high-fat diet-induced obesity and related insulin resistance through increased energy expenditure.

**Immunogen:** Synthetic peptide of human ANGPTL6

**Applications:** ELISA, IHC

**Recommended Dilutions:** IHC: 25-100; ELISA: 5000-10000

**Host Species:** Rabbit

**Clonality:** Rabbit Polyclonal

**Isotype:** Immunogen-specific rabbit IgG

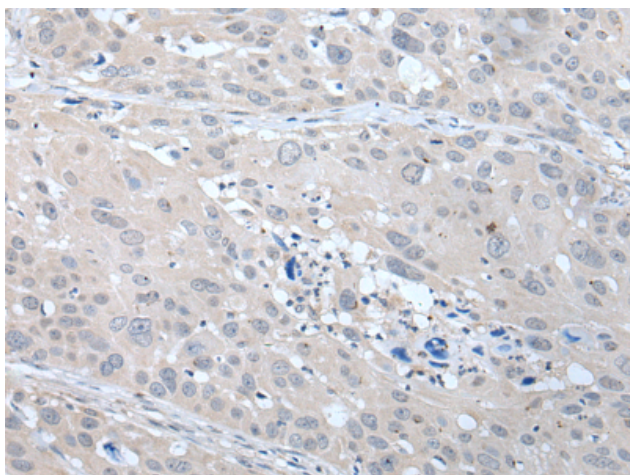
**Purification:** Antigen affinity purification

**Species Reactivity:** Human

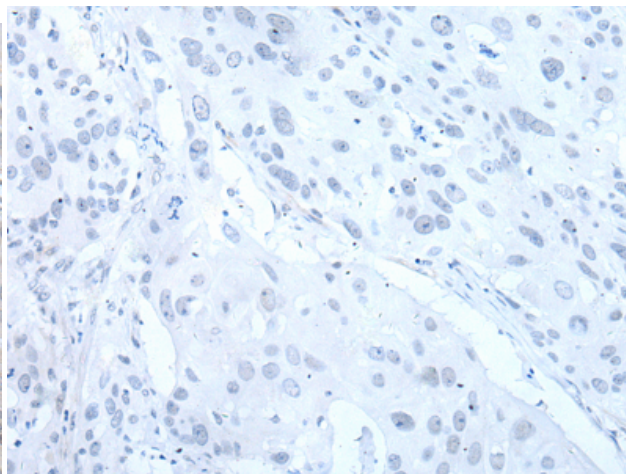
**Constituents:** PBS (without Mg<sup>2+</sup> and Ca<sup>2+</sup>), pH 7.4, 150 mM NaCl, 0.05% Sodium Azide and 40% glycerol

**Research Areas:** Metabolism, Cardiovascular

**Storage & Shipping:** Store at -20°C. Avoid repeated freezing and thawing



Immunohistochemistry analysis of paraffin embedded Human esophagus cancer tissue using 221478(ANGPTL6 Antibody) at a dilution of 1/25(Secreted).



In comparison with the IHC on the left, the same paraffin-embedded Human esophagus cancer tissue is first treated with the synthetic peptide and then with 221478(Anti-ANGPTL6 Antibody) at dilution 1/25.