

## ANGPTL5 RABBIT PAB

**Cat.#:** S220052

**Product Name:** Anti-ANGPTL5 Rabbit Polyclonal Antibody

**Synonyms:**

**UNIPROT ID:** Q86XS5 (Gene Accession - NP\_835228 )

**Background:** Angptl5 (angiopoietin-like 5) is a 388 amino acid secreted protein that contains one fibrinogen C-terminal domain and is primarily expressed in adult heart tissue. The gene encoding Angptl5 maps to human chromosome 11. With approximately 135 million base pairs and 1,400 genes, chromosome 11 comprises approximately 4% of human genomic DNA and is considered a gene and disease association dense chromosome. The chromosome 11 encoded Atm gene is important for regulation of cell cycle arrest and apoptosis following double strand DNA breaks. Atm mutation leads to the disorder known as ataxia-telangiectasia.

**Immunogen:** Synthetic peptide of human ANGPTL5

**Applications:** ELISA, IHC

**Recommended Dilutions:** IHC: 20-100; ELISA: 2000-5000

**Host Species:** Rabbit

**Clonality:** Rabbit Polyclonal

**Isotype:** Immunogen-specific rabbit IgG

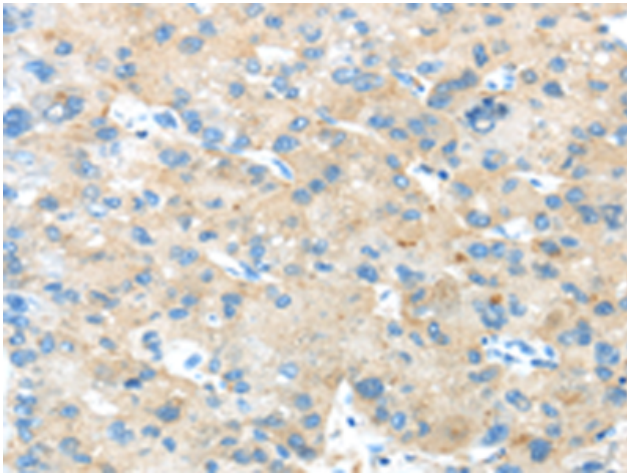
**Purification:** Antigen affinity purification

**Species Reactivity:** Human

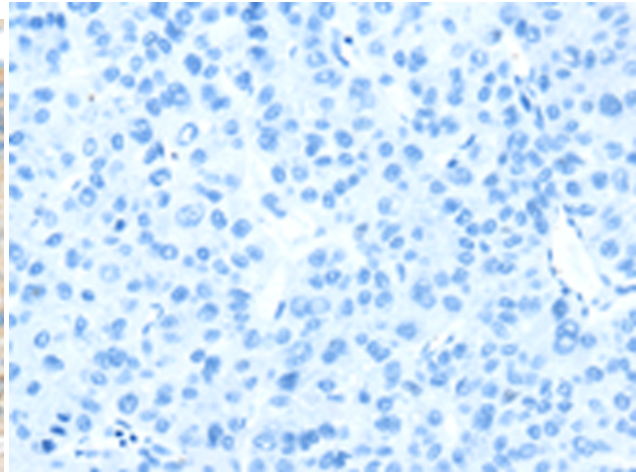
**Constituents:** PBS (without Mg<sup>2+</sup> and Ca<sup>2+</sup>), pH 7.4, 150 mM NaCl, 0.05% Sodium Azide and 40% glycerol

**Research Areas:** Cardiovascular

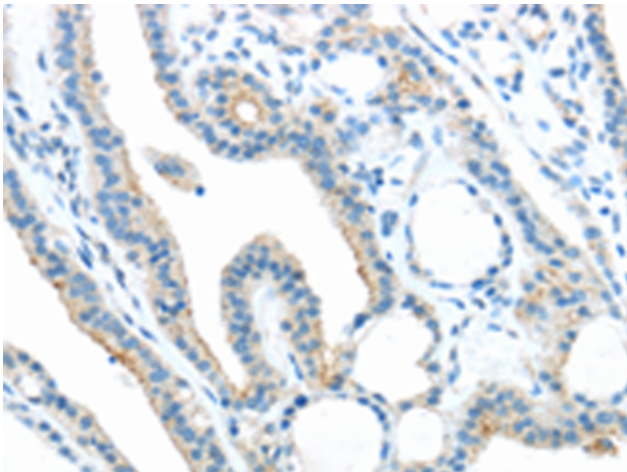
**Storage & Shipping:** Store at -20°C. Avoid repeated freezing and thawing



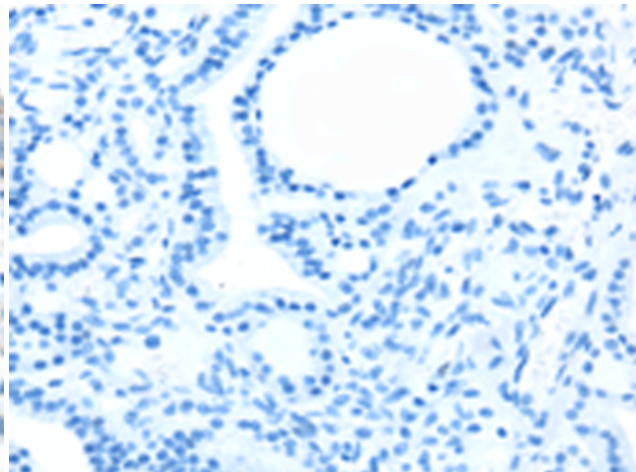
Immunohistochemistry analysis of paraffin-embedded Human liver cancer tissue using 220052 (ANGPTL5 Antibody) at a dilution of 1/25 (Cell membrane and Cytoplasm).



In comparison with the IHC on the left, the same paraffin-embedded Human liver cancer tissue is first treated with the synthetic peptide and then with 220052 (Anti-ANGPTL5 Antibody) at dilution 1/25.



The image on the left is immunohistochemistry of paraffin-embedded Human thyroid cancer tissue using 220052 (Anti-ANGPTL5 Antibody) at a dilution of 1/25.



In comparison with the IHC on the left, the same paraffin-embedded Human thyroid cancer tissue is first treated with synthetic peptide and then with D260866 (Anti-ANGPTL5 Antibody) at dilution 1/25.