

## ANAPC15 RABBIT PAB

**Cat.#:** S221635

**Product Name:** Anti-ANAPC15 Rabbit Polyclonal Antibody

**Synonyms:** APC15; HSPC020; C11orf51

**UNIPROT ID:** P60006 (Gene Accession - NP\_054761)

**Background:** Involved in regulation of mitotic cell cycle spindle assembly checkpoint. Part of anaphase-promoting complex. [provided by Alliance of Genome Resources, Apr 2022]

**Immunogen:** Synthetic peptide of human ANAPC15

**Applications:** ELISA, IHC

**Recommended Dilutions:** IHC: 100-300; ELISA: 5000-10000

**Host Species:** Rabbit

**Clonality:** Rabbit Polyclonal

**Isotype:** Immunogen-specific rabbit IgG

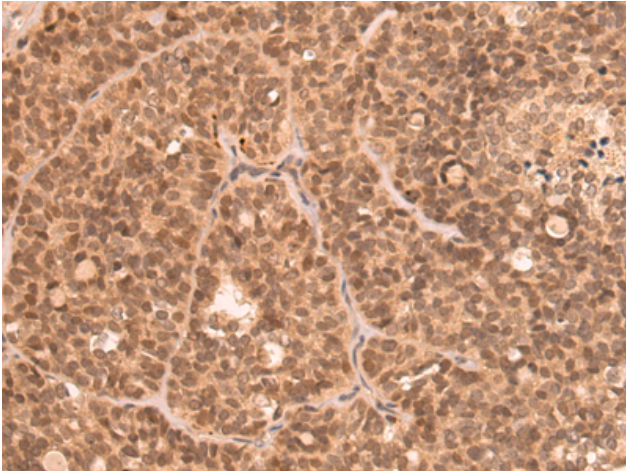
**Purification:** Antigen affinity purification

**Species Reactivity:** Human, Mouse, Rat

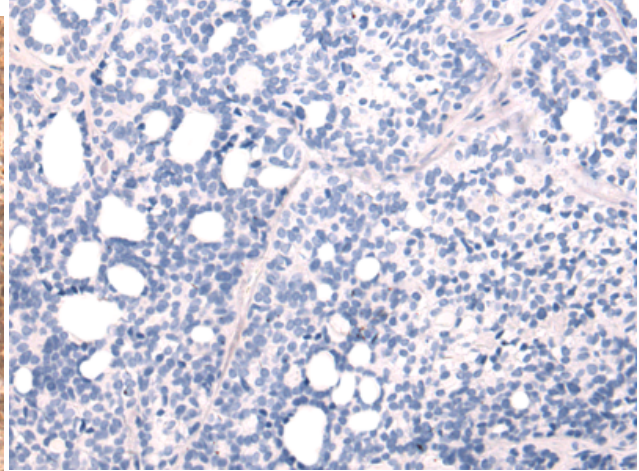
**Constituents:** PBS (without Mg<sup>2+</sup> and Ca<sup>2+</sup>), pH 7.4, 150 mM NaCl, 0.05% Sodium Azide and 40% glycerol

**Research Areas:** Cell Biology

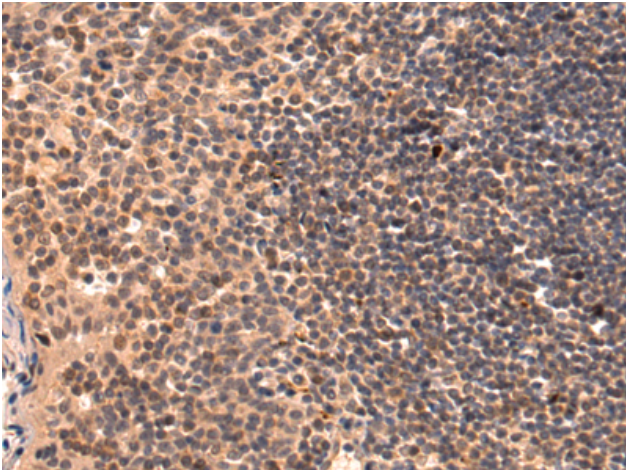
**Storage & Shipping:** Store at -20°C. Avoid repeated freezing and thawing



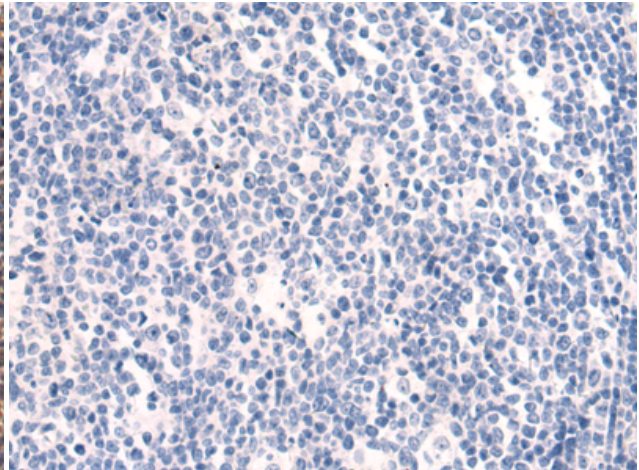
Immunohistochemistry analysis of paraffin embedded Human thyroid cancer tissue using 221635(ANAPC15 Antibody) at a dilution of 1/50(Cytoplasm and Nucleus).



In comparison with the IHC on the left, the same paraffin-embedded Human thyroid cancer tissue is first treated with the synthetic peptide and then with 221635(Anti-ANAPC15 Antibody) at dilution 1/50.



The image on the left is immunohistochemistry of paraffin-embedded Human tonsil tissue using 221635(Anti-ANAPC15 Antibody) at a dilution of 1/50.



In comparison with the IHC on the left, the same paraffin-embedded Human tonsil tissue is first treated with synthetic peptide and then with D263320(Anti-ANAPC15 Antibody) at dilution 1/50.