

## AMZ2 RABBIT PAB

**Cat.#:** S217030

**Product Name:** Anti-AMZ2 Rabbit Polyclonal Antibody

**Synonyms:**

**UNIPROT ID:** Q86W34 (Gene Accession - BC050709 )

**Background:** AMZ2 (archaelysin family metalloproteinase 2), also known as archaemetzincin-2 or archeobacterial metalloproteinase-like protein 2, is a 360 amino acid protein belonging to the peptidase M54 family. Encoded by a gene that maps to human chromosome 17q24.2, AMZ2 is predominantly expressed in heart and testis. AMZ2 is also expressed in kidney, liver, pancreas, lung, brain and placenta, and in fetal tissues such as kidney, liver, lung and brain. AMZ2 participates in metal ion binding and functions as a zinc metalloprotease. AMZ2 is inhibited by both general metalloprotease inhibitors o-phenanthroline and batimastat. Exhibiting aminopeptidase activity, AMZ2 acts against Angiotensin in vitro, but does not hydrolyze either Neurogranin or Angiotensin.

**Immunogen:** Fusion protein of human AMZ2

**Applications:** ELISA, IHC

**Recommended Dilutions:** IHC: 50-200; ELISA: 1000-5000

**Host Species:** Rabbit

**Clonality:** Rabbit Polyclonal

**Isotype:** Immunogen-specific rabbit IgG

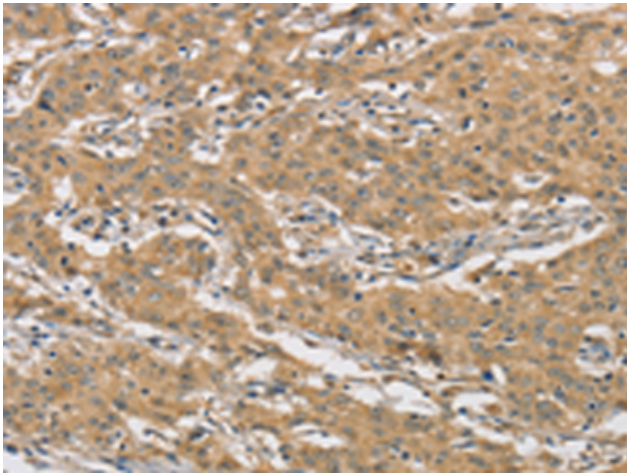
**Purification:** Antigen affinity purification

**Species Reactivity:** Human

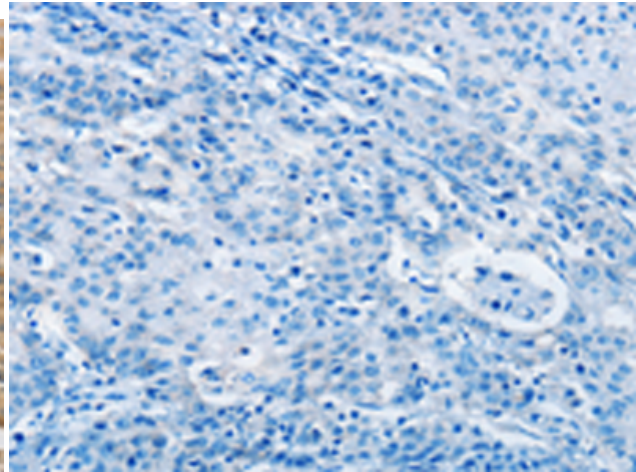
**Constituents:** PBS (without Mg<sup>2+</sup> and Ca<sup>2+</sup>), pH 7.4, 150 mM NaCl, 0.05% Sodium Azide and 40% glycerol

**Research Areas:** Cell Biology

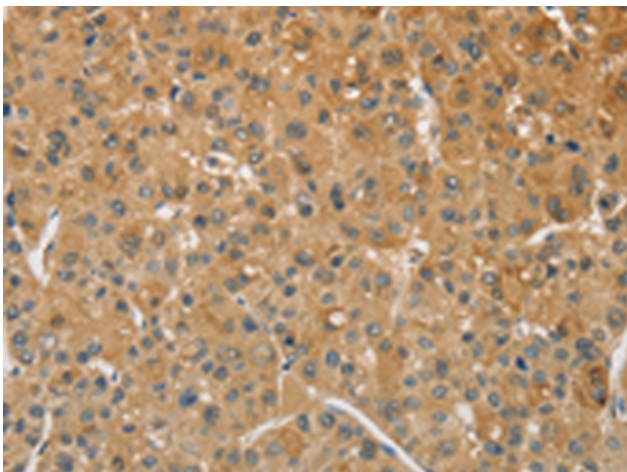
**Storage & Shipping:** Store at -20°C. Avoid repeated freezing and thawing



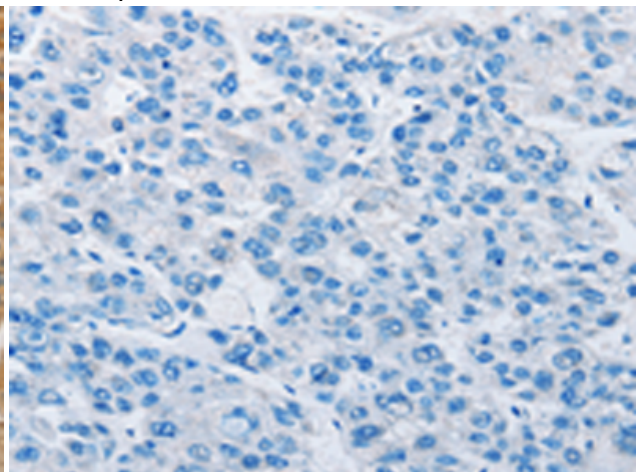
Immunohistochemistry analysis of paraffin embedded Human gastric cancer tissue using 217030 (AMZ2 Antibody) at a dilution of 1/60 (Cytoplasm or Nucleus).



In comparison with the IHC on the left, the same paraffin-embedded Human gastric cancer tissue is first treated with the fusion protein and then with 217030 (Anti-AMZ2 Antibody) at dilution 1/60.



The image on the left is immunohistochemistry of paraffin-embedded Human liver cancer tissue using 217030 (Anti-AMZ2 Antibody) at a dilution of 1/60.



In comparison with the IHC on the left, the same paraffin-embedded Human liver cancer tissue is first treated with fusion protein and then with D221674 (Anti-AMZ2 Antibody) at dilution 1/60.