

## AMPK BETA 1 (1A7) MOUSE MAB

**Cat.#:** N261093

**Product Name:** Anti-AMPK beta 1 (1A7) Mouse Monoclonal Antibody

**Synonyms:** 5' -AMP-activated protein kinase subunit beta-1; AMP-activated; noncatalytic; beta-1; AMPK; AMPK beta 1 chain; AMPK subunit beta-1; AMPK-BETA-1; AMPKb; HAMPKb; PRKAB1

**UNIPROT ID:** Q9Y478

**Background:** AMP-activated protein kinase (AMPK) is highly conserved from yeast to plants and animals and plays a key role in the regulation of energy homeostasis. AMPK is a heterotrimeric complex composed of a catalytic  $\alpha$  subunit and regulatory  $\beta$  and  $\gamma$  subunits, each of which is encoded by two or three distinct genes ( $\alpha$ 1, 2;  $\beta$ 1, 2;  $\gamma$ 1, 2, 3).

**Immunogen:** Purified recombinant human AMPK beta 1 protein fragments expressed in E.coli.

**Applications:** WB,IHC-F,IHC-P,ICC/IF,IP

**Recommended Dilutions:** WB: 1/500-1/1000 IHC: 1/50-1/100 IF: 1/50-1/200 IP: 1/20

**Host Species:** Mouse

**Clonality:** Mouse Monoclonal

**Clone ID:** 1A7-E11-E9

**MW:** Calculated MW: 30 kDa; Observed MW: 38 kDa

**Isotype:** IgG2a

**Purification:** Affinity Purified

**Species Reactivity:** Human,Mouse,Rat,Monkey

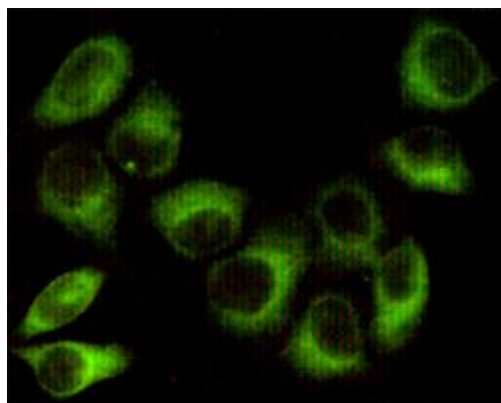
**Conjugation:** Unconjugated

**Modification:** Unmodified

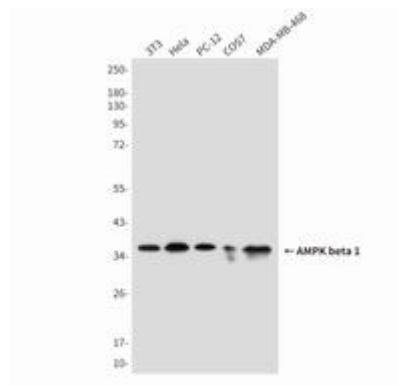
**Constituents:** PBS (without Mg<sup>2+</sup> and Ca<sup>2+</sup>), pH 7.3 containing 50% glycerol, 0.5% BSA and 0.02% sodium azide

**Research Areas:** Signal Transduction

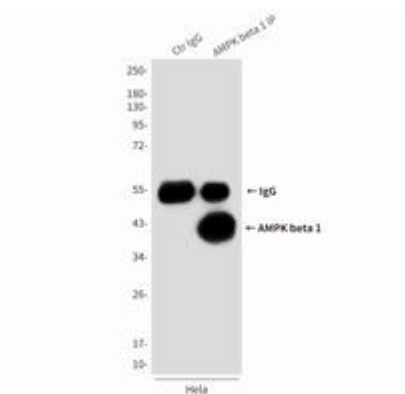
**Storage & Shipping:** Store at -20°C. Avoid repeated freezing and thawing



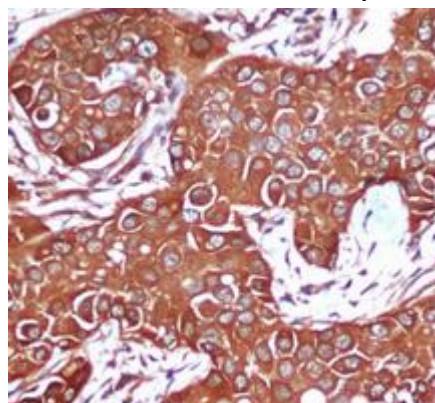
Immunocytochemistry analysis of AMPK beta 1 (1A7) in HeLa using AMPK beta 1 antibody.



Western blot analysis of AMPK beta 1 in 3T3, HeLa, PC-12, COS7 and MDA-MB-468 lysates using AMPK beta 1 antibody.



Immunoprecipitation analysis of AMPK beta 1 (1A7) in HeLa lysates using AMPK beta 1 antibody.



Immunohistochemistry analysis of paraffin-embedded Breast cancer using AMPK beta 1 antibody. High-pressure and temperature Sodium Citrate pH 6.0 was used for antigen retrieval.