

AMPA RECEPTOR 2 RABBIT PAB

Cat.#: N226060

Product Name: Anti-AMPA Receptor 2 Rabbit pAb

Synonyms: GRIA2; GLUR2; Glutamate receptor 2; GluR-2; AMPA-selective glutamate receptor 2; GluR-B; GluR-K2; Glutamate receptor ionotropic; AMPA 2; GluA2

UNIPROT ID: P42262

Background: Ionotropic glutamate receptor. L-glutamate acts as an excitatory neurotransmitter at many synapses in the central nervous system. Binding of the excitatory neurotransmitter L-glutamate induces a conformation change, leading to the opening of the cation channel, and thereby converts the chemical signal to an electrical impulse. The receptor then desensitizes rapidly and enters a transient inactive state, characterized by the presence of bound agonist.

Immunogen: Recombinant protein of human Glutamate receptor 2

Applications: WB,IHC-F,IHC-P,ICC/IF,IP

Recommended Dilutions: WB: 1/500-1/1000 IHC: 1/50-1/100 IF: 1/50-1/200 IP: 1/20

Host Species: Rabbit

Clonality: Rabbit Polyclonal

Clone ID: -

MW: Calculated MW: 99 kDa; Observed MW: 99 kDa

Isotype: IgG

Purification: Affinity Purified

Species Reactivity: Mouse,Rat

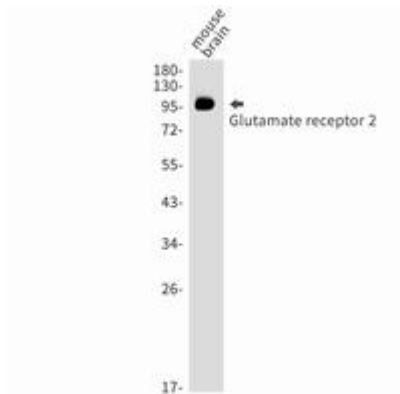
Conjugation: Unconjugated

Modification: Unmodified

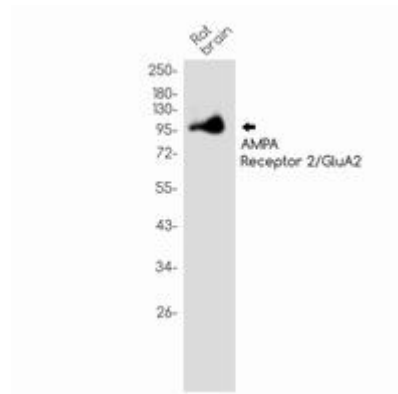
Constituents: PBS (without Mg²⁺ and Ca²⁺), pH 7.3 containing 50% glycerol, 0.5% BSA and 0.02% sodium azide

Research Areas: Neuroscience

Storage & Shipping: Store at -20°C. Avoid repeated freezing and thawing



Western blot analysis of Glutamate receptor 2 in mouse brain lysates using Glutamate receptor 2 antibody.



Western blot analysis of AMPA Receptor 2/GluA2 in rat brain lysates using AMPA Receptor 2 antibody.