

## AMBRA1 RABBIT PAB

**Cat.#:** S216994

**Product Name:** Anti-AMBRA1 Rabbit Polyclonal Antibody

**Synonyms:** DCAF3; WDR94

**UNIPROT ID:** Q9C0C7 (Gene Accession - BC045609 )

**Background:** Human AMBRA1, which encodes a deduced 1,269-amino acid protein. Ambra1 was expressed throughout development in mice, with strong staining in the neuroepithelium. Regulates autophagy and development of the nervous system. Involved in autophagy in controlling protein turnover during neuronal development, and in regulating normal cell survival and proliferation. Interacts with BECN1. Probably forms a complex with BECN1 and PIK3C3.

**Immunogen:** Fusion protein of human AMBRA1

**Applications:** ELISA, IHC

**Recommended Dilutions:** IHC: 25-100; ELISA: 2000-5000

**Host Species:** Rabbit

**Clonality:** Rabbit Polyclonal

**Isotype:** Immunogen-specific rabbit IgG

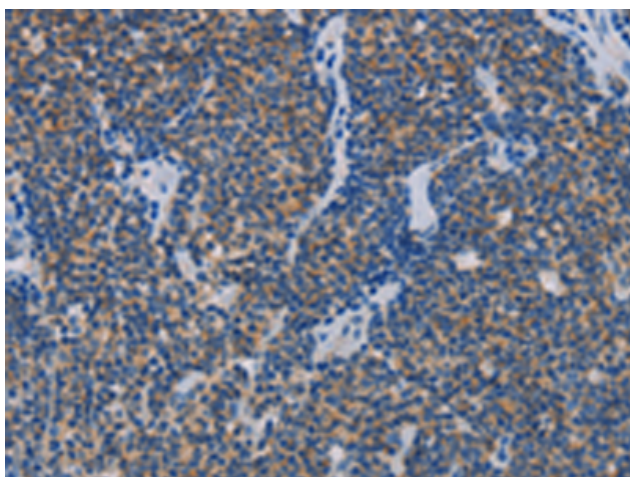
**Purification:** Antigen affinity purification

**Species Reactivity:** Human, Mouse

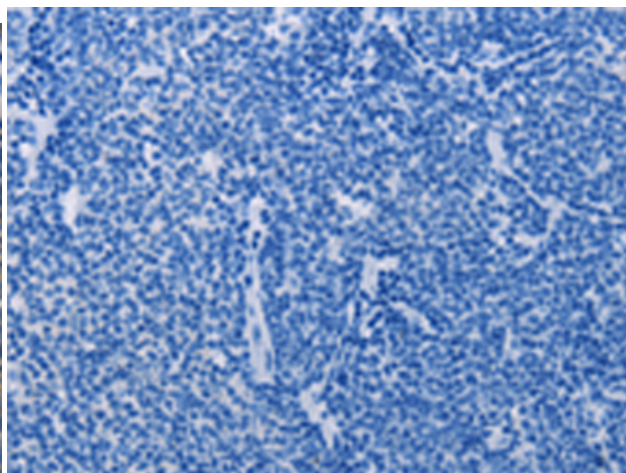
**Constituents:** PBS (without Mg<sup>2+</sup> and Ca<sup>2+</sup>), pH 7.4, 150 mM NaCl, 0.05% Sodium Azide and 40% glycerol

**Research Areas:** Cancer, Neuroscience, Cardiovascular

**Storage & Shipping:** Store at -20°C. Avoid repeated freezing and thawing



Immunohistochemistry analysis of paraffin embedded Human lymphoma tissue using 216994(AMBRA1 Antibody) at a dilution of 1/25(Cytoplasm).



In comparison with the IHC on the left, the same paraffin-embedded Human lymphoma tissue is first treated with the fusion protein and then with 216994(Anti-AMBRA1 Antibody) at dilution 1/25.