

## ALYREF RABBIT PAB

**Cat.#:** S213803

**Product Name:** Anti-ALYREF Rabbit Polyclonal Antibody

**Synonyms:** ALY; BEF; REF; THOC4; ALY/REF

**UNIPROT ID:** Q86V81 (Gene Accession - NP\_005773 )

**Background:** The protein encoded by this gene is a heat stable, nuclear protein and functions as a molecular chaperone. It is thought to regulate dimerization, DNA binding, and transcriptional activity of basic region-leucine zipper (bZIP) proteins.

**Immunogen:** Synthetic peptide of human ALYREF

**Applications:** ELISA, IHC

**Recommended Dilutions:** IHC: 25-100; ELISA: 2000-5000

**Host Species:** Rabbit

**Clonality:** Rabbit Polyclonal

**Isotype:** Immunogen-specific rabbit IgG

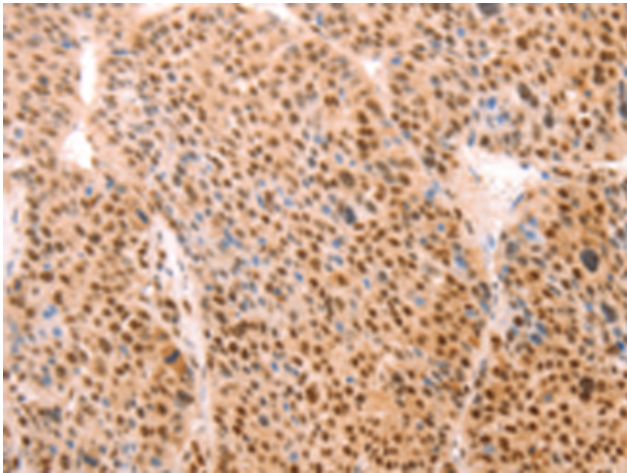
**Purification:** Antigen affinity purification

**Species Reactivity:** Human, Mouse

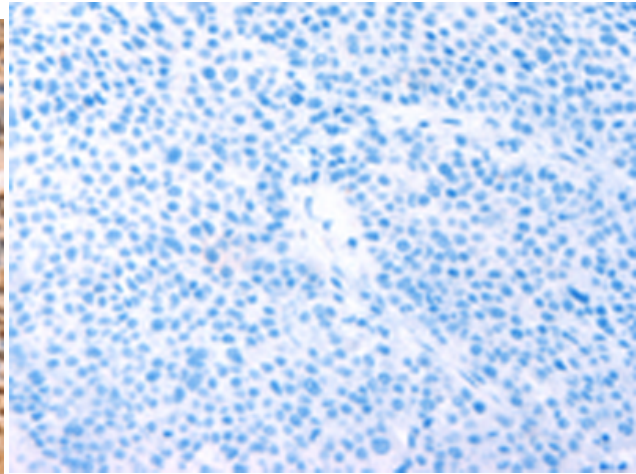
**Constituents:** PBS (without Mg<sup>2+</sup> and Ca<sup>2+</sup>), pH 7.4, 150 mM NaCl, 0.05% Sodium Azide and 40% glycerol

**Research Areas:** Epigenetics and Nuclear Signaling

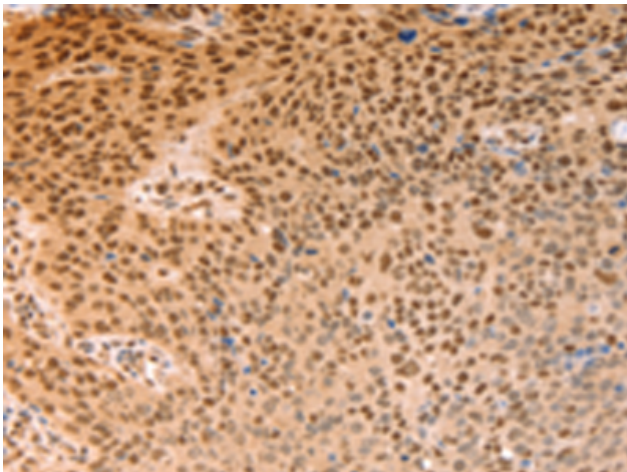
**Storage & Shipping:** Store at -20°C. Avoid repeated freezing and thawing



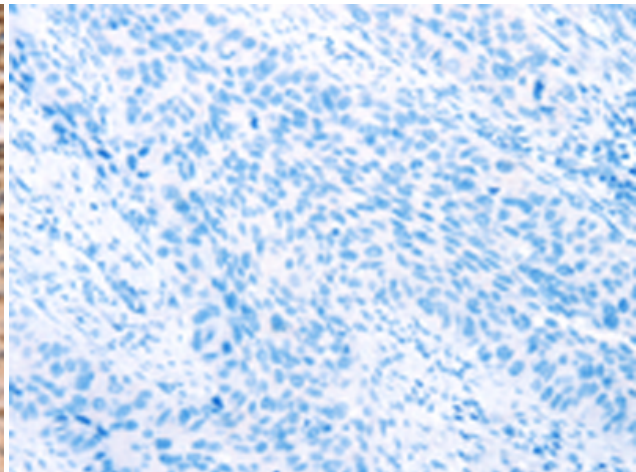
Immunohistochemistry analysis of paraffin-embedded Human liver cancer tissue using 213803(AlYREF Antibody) at a dilution of 1/15(Nucleus, Cytoplasm).



In comparison with the IHC on the left, the same paraffin-embedded Human liver cancer tissue is first treated with the synthetic peptide and then with 213803(Anti-ALYREF Antibody) at dilution 1/15.



The image on the left is immunohistochemistry of paraffin-embedded Human lymphoma tissue using 213803(Anti-ALYREF Antibody) at a dilution of 1/15.



In comparison with the IHC on the left, the same paraffin-embedded Human lymphoma tissue is first treated with synthetic peptide and then with D160858(Anti-ALYREF Antibody) at dilution 1/15.