

ALPHA TUBULIN RABBIT MAB

Cat.#: N261831

Product Name: Anti-alpha Tubulin Rabbit Monoclonal Antibody

Synonyms: ALS22; TUBA1; H2-ALPHA

UNIPROT ID: P68366

Background: TUBA1A Tubulin is the major constituent of microtubules. It binds two moles of GTP, one at an exchangeable site on the beta chain and one at a non-exchangeable site on the alpha-chain.

Immunogen: A synthetic peptide of human alpha Tubulin

Applications: WB,IHC-F,IHC-P,ICC/IF,IP

Recommended Dilutions: WB: 1/500-1/1000 IHC: 1/50-1/100 IF: 1/50-1/200 IP: 1/20

Host Species: Rabbit

Clonality: Rabbit Monoclonal

Clone ID: R02-2H3

MW: Calculated MW: 50 kDa; Observed MW: 50 kDa

Isotype: IgG

Purification: Affinity Purified

Species Reactivity: Human,Mouse,Rat,Hamster

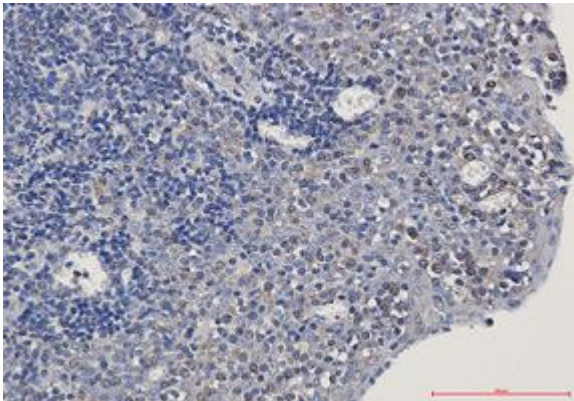
Conjugation: Unconjugated

Modification: Unmodified

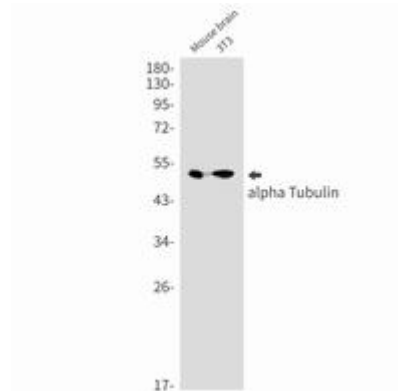
Constituents: PBS (without Mg²⁺ and Ca²⁺), pH 7.3 containing 50% glycerol, 0.5% BSA and 0.02% sodium azide

Research Areas: Signal Transduction

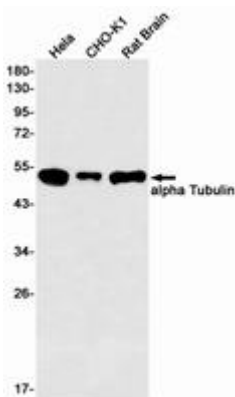
Storage & Shipping: Store at -20°C. Avoid repeated freezing and thawing



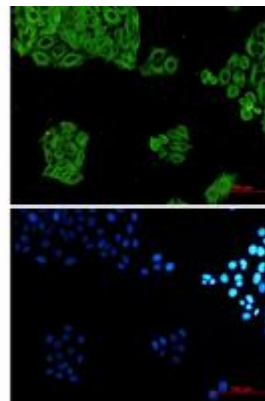
Immunohistochemistry analysis of paraffin-embedded Human tonsil using alpha Tubulin antibody. High-pressure and temperature Sodium Citrate pH 6.0 was used for antigen retrieval.



Western blot analysis of alpha Tubulin in mouse brain, 3T3 lysates using alpha Tubulin antibody.



Western blot analysis of alpha Tubulin in HeLa, CHO-K1, rat Brain lysates using alpha Tubulin antibody.



Immunocytochemistry analysis of alpha Tubulin (green) in HeLa using alpha Tubulin antibody, and DAPI (blue).