

## ALPHA TUBULIN (4C9) MOUSE MAB

**Cat.#:** N261207

**Product Name:** Anti-alpha Tubulin (4C9) Mouse Monoclonal Antibody

**Synonyms:** Tubulin alpha-1B chain; Alpha-tubulin ubiquitous; Tubulin K-alpha-1; Tubulin alpha-ubiquitous chain

**UNIPROT ID:** P68363

**Background:** TUBA1A Tubulin is the major constituent of microtubules. It binds two moles of GTP, one at an exchangeable site on the beta chain and one at a non-exchangeable site on the alpha-chain.

**Immunogen:** Recombinant Protein of Tubulin alpha-1A chain

**Applications:** WB,IHC-F,IHC-P,ICC/IF,IP

**Recommended Dilutions:** WB: 1/500-1/1000 IHC: 1/50-1/100 IF: 1/50-1/200 IP: 1/20

**Host Species:** Mouse

**Clonality:** Mouse Monoclonal

**Clone ID:** 4C9-6H6-4F7

**MW:** Calculated MW: 50 kDa; Observed MW: 50 kDa

**Isotype:** IgG1

**Purification:** Affinity Purified

**Species Reactivity:** Human,Rat,Mouse

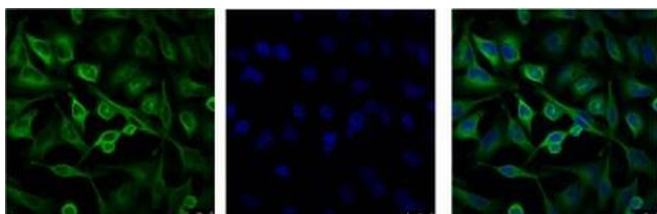
**Conjugation:** Unconjugated

**Modification:** Unmodified

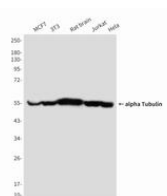
**Constituents:** PBS (without Mg<sup>2+</sup> and Ca<sup>2+</sup>), pH 7.3 containing 50% glycerol, 0.5% BSA and 0.02% sodium azide

**Research Areas:** Signal Transduction

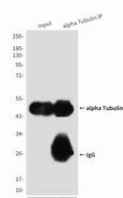
**Storage & Shipping:** Store at -20°C. Avoid repeated freezing and thawing



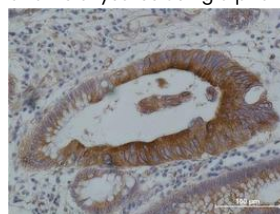
Immunofluorescence analysis of alpha Tubulin (4C9) in HeLa using alpha Tubulin (4C9) antibody (Left), and DAPI (blue).



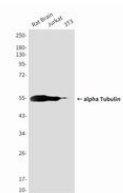
Western blot analysis of alpha Tubulin in MCF-7, 3T3, rat Brain, Jurkat and HeLa lysates using alpha tubulin antibody.



Immunoprecipitation analysis of alpha Tubulin in mouse Brain Tissue lysates using alpha Tubulin antibody.



Immunohistochemistry analysis of paraffin-embedded Human Colon carcinoma using alpha tubulin antibody. High-pressure and temperature Sodium Citrate pH 6.0 was used for antigen retrieval.



Western blot analysis of alpha Tubulin (4C9) in rat brain, Jurkat, 3T3 lysates using alpha Tubulin (4C9) antibody.