

ALPHA SKELETAL MUSCLE ACTIN (2B10) MOUSE MAB

Cat.#: N261251

Product Name: Anti-alpha Skeletal Muscle Actin (2B10) Mouse Monoclonal Antibody

Synonyms: ACTA1; ACTA; Actin; alpha skeletal muscle; Alpha-actin-1

UNIPROT ID: P68133

Background: Actins are highly conserved proteins that are involved in various types of cell motility and are ubiquitously expressed in all eukaryotic cells.

Immunogen: Synthetic Peptide of α skeletal muscle actin

Applications: WB,IHC-F,IHC-P,ICC/IF,IP

Recommended Dilutions: WB: 1/500-1/1000 IHC: 1/50-1/100 IF: 1/50-1/200 IP: 1/20

Host Species: Mouse

Clonality: Mouse Monoclonal

Clone ID: 2B10-5B7-1F7

MW: Calculated MW: 42 kDa; Observed MW: 42 kDa

Isotype: IgG

Purification: Affinity Purified

Species Reactivity: Human,Mouse,Rat

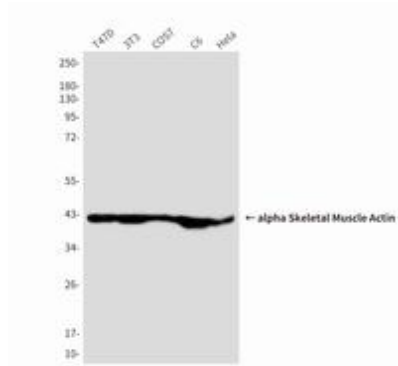
Conjugation: Unconjugated

Modification: Unmodified

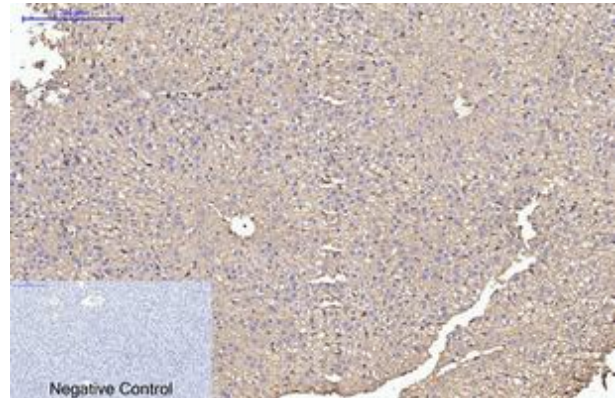
Constituents: PBS (without Mg²⁺ and Ca²⁺), pH 7.3 containing 50% glycerol, 0.5% BSA and 0.02% sodium azide

Research Areas: Signal Transduction

Storage & Shipping: Store at -20°C. Avoid repeated freezing and thawing



Western blot analysis of alpha Skeletal Muscle Actin (2B10) in T47D, 3T3, COS7, C6 and Hela lysates using alpha Skeletal Muscle Actin (2B10) antibody



Immunohistochemistry analysis of paraffin-embedded rat liver tissue using alpha Skeletal Muscle Actin (2B10) antibody. High-pressure and temperature Sodium Citrate pH 6.0 was used for antigen retrieval. Negative control was used by secondary antibody only.